



LIVE THE CENTRAL PARK LIFE



WELCOME TO PARC CENTRAL RESIDENCES

A luxurious Executive Condominium by Hoi Hup Sunway,
this is where you can be amongst both verdant greenery
and architectural marvels.

LET EVERY HOMECOMING BE A GRAND ARRIVAL



ARRIVAL HALL

ARTIST'S IMPRESSION



DISCOVER CENTRAL PARK LIVING IN THE TAMPINES HEARTLANDS

Inspired by Central Park in New York, this is where you can make your home amidst a verdant oasis, while only minutes away from metropolitan convenience.



LAKE POOL

ARTIST'S IMPRESSION



WORLDS OF AMENITIES. NOW MINUTES AWAY



ACCESSIBILITY

Tampines West MRT	3-min drive
Tampines MRT	4-min drive
Tampines North MRT (upcoming)	6-min drive

Tampines Expressway (TPE)	5-min drive
Pan Island Expressway (PIE)	5-min drive



LIFESTYLE AMENITIES

Tampines Mall	4-min drive
Tampines 1	5-min drive

Sheng Siong	7-min walk
Giant Hypermarket	4-min drive

COURTS Megastore	5-min drive
IKEA	5-min drive

Our Tampines Hub	4-min drive
SAFRA Tampines	4-min drive
Tampines Central CC	4-min drive

Future New Town (upcoming)	TBC
----------------------------	-----



NATURE AMENITIES

Tampines Central Park	12-min walk
Sun Plaza Park	5-min drive
Bedok Reservoir Park	6-min drive
Tampines Quarry	7-min drive



EDUCATION

Poi Ching Primary School	9-min walk
Saint Hilda's Primary School	5-min drive

Springfield Secondary School	3-min drive
------------------------------	-------------

Temasek Polytechnic	4-min drive
Tampines Meridian JC	5-min drive

UWCSEA East Campus	6-min walk
--------------------	------------



WORK

JTC Space @ Tampines North	3-min drive
Tampines Regional Centre	5-min drive
Changi Business Park	8-min drive
Changi Airport	9-min drive
Jewel Changi Airport	10-min drive

DISCOVER A RECREATIONAL HAVEN IN A REGIONAL HUB

Enjoy unparalleled connectivity as you go from work to play in the matured estate of Tampines.



FUTURE NEW TOWN IN THE VICINITY

Only a short distance from Parc Central Residences is where one can work, play, and learn in a highly liveable and sustainable future town that will occupy the location of the former Paya Lebar Air Base.



TRAVEL AT YOUR CONVENIENCE

Zip across Singapore with TPE (Tampines Expressway), PIE (Pan Island Expressway), and 3 MRT stations around Parc Central Residences. With the ORRS (Outer Ring Road System) semi-expressway at your doorstep, you are more connected to the island's many amenities than ever.



NATURE RETREATS ABOUND

Enjoy a well-deserved rest amidst the serendipity of nature with Tampines Eco Green within walking distance. Or, hike and bike your way across the hidden trails of Tampines Quarry.



LIFESTYLE AND RETAIL ARRAY

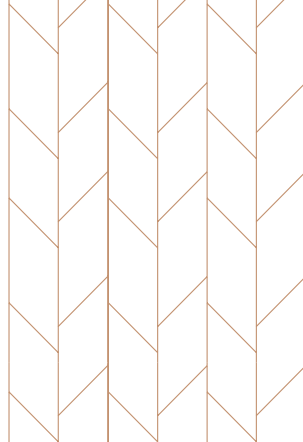
Catch the latest blockbuster, feast to your heart's content, go on a shopping spree, or explore the trendiest haunts with IKEA, Giant Hypermarket, Tampines Regional Centre, Our Tampines Hub, Jewel Changi Airport, and the upcoming Terminal 5 only minutes away.

WHERE VERDANT NATURE MEETS MODERN SOPHISTICATION



ARTIST'S IMPRESSION

Come home to Parc Central Residences to bask in tranquility reminiscent of Central Park itself. As you venture across the many activity areas, you will discover myriad amenities that imbue everyday life with a touch of the extraordinary.



DISCOVER AN ADVENTURE HAVEN IN A NATURE SANCTUARY

Step up to exciting adventures galore, or step off the beaten track to revel in the calmness of evergreen nature.



Discover various facilities for relaxation and recreation at The Parc House. Venture up its undulating stairs, past an exquisite flowing waterfall feature, to enjoy picturesque views of a naturalistic 51M Lake Pool amidst pockets of lush greenery.

THE PARC HOUSE

Feast in style at the NYC steakhouse-style private dining area with attached kitchen, then follow up with a movie at the Broadway-themed media room. Entertain friends at the spacious function room, get down to business at the co-working space within the library, or head up to the Sky Terrace for spectacular vistas of the naturalistic 51M Lake Pool just below. Be it family time or me-time, good times await at Parc Central Residences.



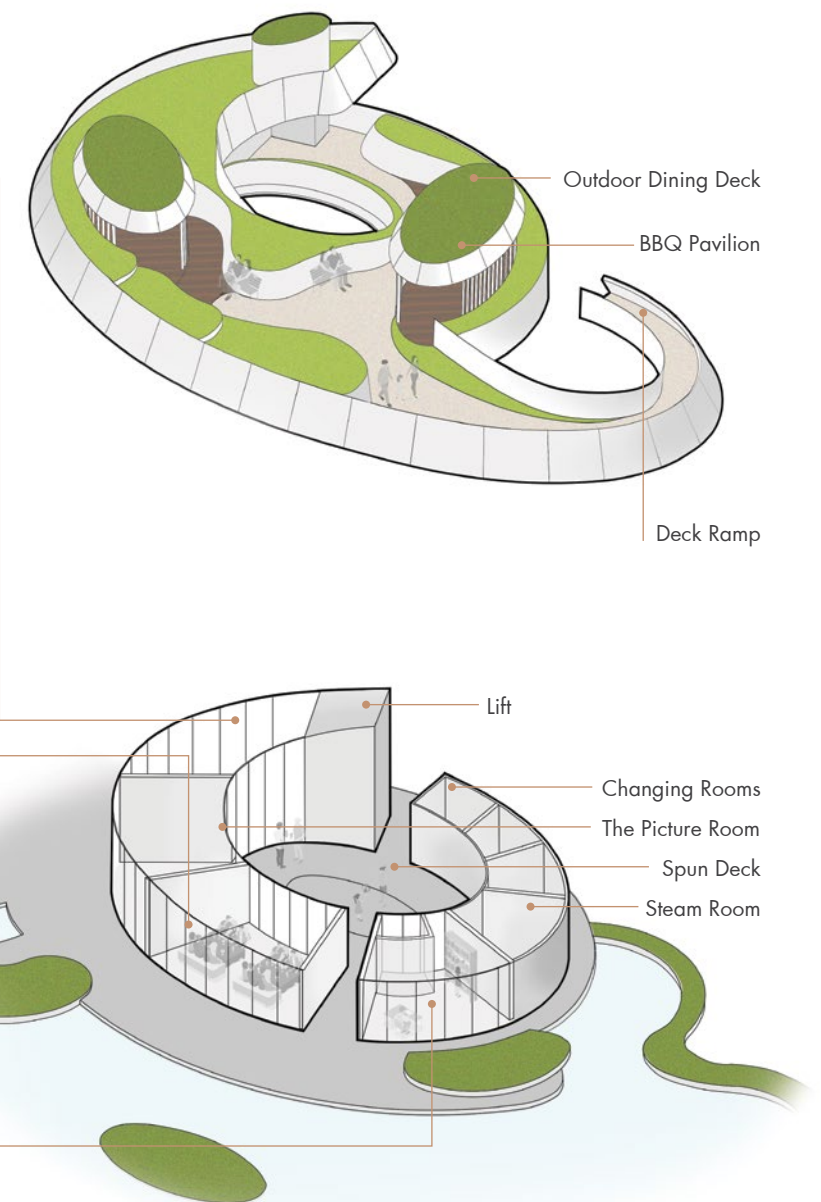
The Private Room | Gourmet Dining Area



The Great Room | Function Room



The Reading Room | Library with Co-working Space





CHILDREN POOL

ARTIST'S IMPRESSION

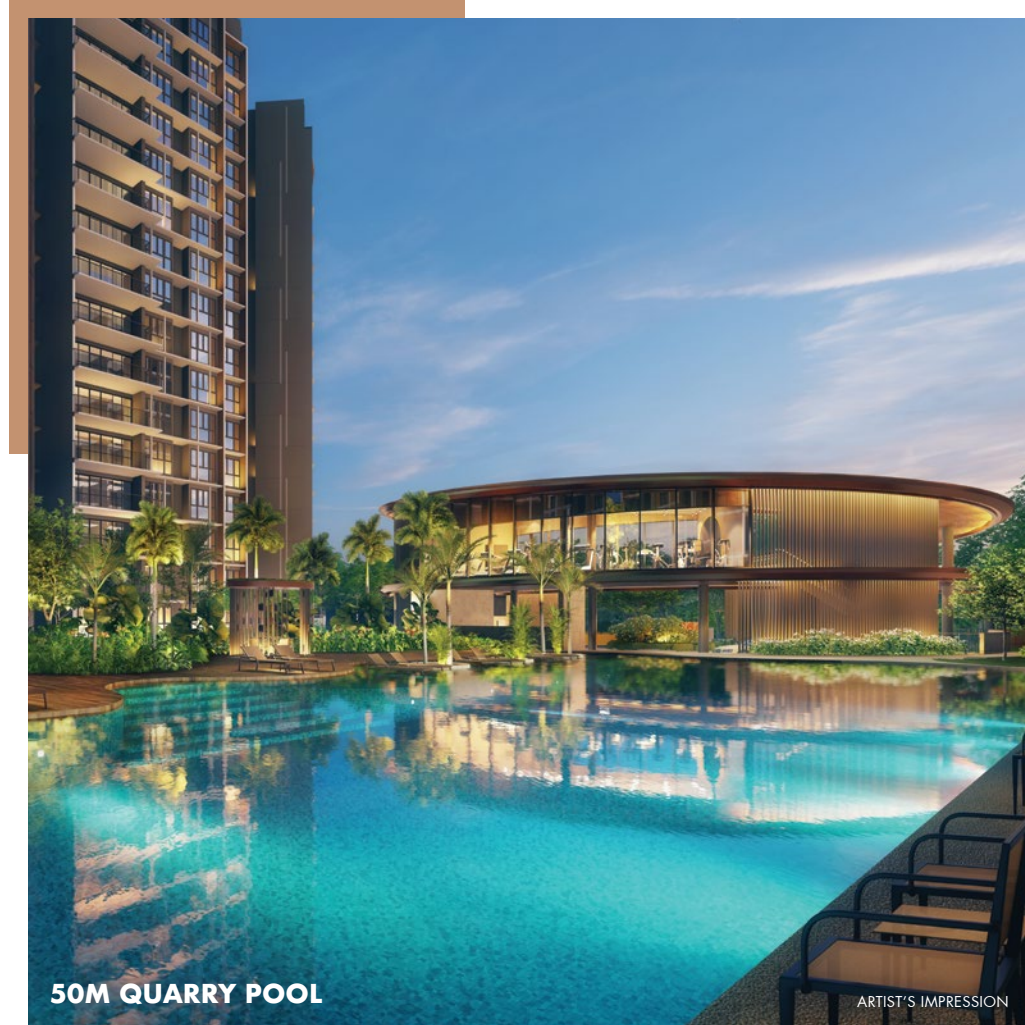
THE LAKE

The possibilities are endless with a rare football field-sized landscape where myriad amenities await. Swim the length and breadth of the naturalistic 51M Lake Pool. Soothe your muscles at the therapeutic jacuzzi massage cove. Guide your child's first dips at the Children Pool, or make your way into The Safari Room for playtime with your kids. This is the home where you can create the most fun-filled moments with your family at every corner.



THE LAWN

Take it easy with a quiet walk along the Butterfly Trail, or flex your green fingers at the Community Garden. Toss a frisbee, gather friends and family for a picnic, or simply frolic across the verdant lawn.

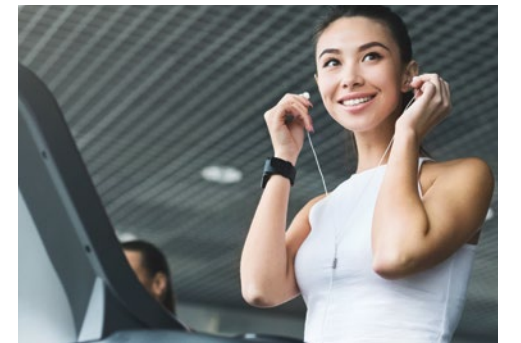


50M QUARRY POOL

ARTIST'S IMPRESSION

THE COVE

Level up your fitness with an elevated gym overlooking the shimmering waters of the 50M Quarry Pool, then cool down with a satisfying water curtain massage at the water trellis just beyond. Whatever you do, you can always look forward to more of the extraordinary at Parc Central Residences.



FUTSAL PLAY COURT

BASKETBALL HALF-COURT

TRAMPOLINE TRAIL

ARTIST'S IMPRESSION

THE PLAYFIELD

Flaunt your fancy footwork at the Futsal play court, sink a jump shot at the Basketball half-court, or leap for joy at the Trampoline Trail. There's never a dull moment to be had with plenty of amenities for both leisure and adventure.

— ◆ —

DISCOVER EVERYDAY UTILITY IN EXTRAVAGANT SPACE

Visual sophistication comes together with functional layout in our 3- to 5-bedroom units.



At Parc Central Residences, every residential layout is designed for optimal spatial planning. Gaze upon grand landscape views from the thoughtfully planned balcony. Get fancy with high ceilings in penthouse units and a roomy walk-in wardrobe for selected unit types. Delight in space on top of aesthetics with an end-panel dresser and full-length mirror in your master bedroom, as well as a yard and household shelter in all units that can be repurposed for extra utility.



SMART LIVING BEGINS AT HOME

Take everyday convenience to the next level with a smart air conditioner, voice control, and digital lockset. With a pan-tilt camera monitoring your home and Schindler UV Clean Air Purifiers sanitising the common lifts, you can also go about your daily life with absolute assurance.



LIVE LARGE WITH MORE LUXE

Central Park living is all set to become more luxurious than ever before with branded fittings and furnishes from Bosch, Yale, hansgrohe, Blum, and more.





BP APPROVAL NO : A1720-00006-2019-BP01
BP DATE : 11 AUGUST 2020

BP APPROVAL NO : A1720-00006-2019-BP02
BP DATE : 12 OCTOBER 2020



MYRIAD FACILITIES INSPIRED BY CENTRAL PARK

ARRIVAL HALL

- 1 Guard House
- 2 Featured Roundabout
- 3 Drop-off Plaza
- 4 Lift at Arrival Hall
- 5 Waiting Lounge
- 6 Gym (2nd Storey)
- 7 Staircase to 2nd Storey

THE COVE

- 8 Palm Trail
- 9 Sun Lounges on Wet Deck
- 10 Leisure Pavilion
- 11 Pool Deck

THE PLAYFIELD

- 12 Quarry Pool (50M)
- 13 Aqua Pavilion
- 14 Aqua Walk
- 15 Quarry Outdoor Shower
- 16 Exercise Plaza
- 17 Tennis Court (Basement)
- 18 Play Court with Futsal Nets
- 19 IPPT/NAPFA Stations
- 20 Duo BBQ Pavilion
- 21 Outdoor Dining Area
- 22 Outdoor Fitness Station
- 23 Jogging Trail

THE PLAYFIELD

- 24 Basketball Half-Court
- 25 Trampoline Trail
- 26 Tree-house Playground
- 27 Sling Seats
- 28 Teppanyaki Pavilion
- 29 Boulderling Wall

THE LAWN

- 30 Community Garden
- 31 Rain Garden Trail
- 32 Garden Pavilion
- 33 Bicycle Station
- 34 Terrace Garden
- 35 Picnic Lawn

- 36 Garden Meadow
- 37 Butterfly Trail
- 38 Thunbergia Pavilion
- 39 Topiary Garden
- 40 Heritage Garden with Tampines Tree
- 41 Bamboo Garden with Reflexology Path
- 42 Bucida Garden
- 43 Tai-Chi Lawn
- 44 Hammock Garden
- 45 Function Lawn
- 46 Asplenium Garden Trail
- 47 Fiddle Tree Court
- 48 Birds of Paradise

THE LAKE

- 49 Family Jacuzzi
- 50 Water Curtain
- 51 Lake Alcove
- 52 Lake Sun Deck
- 53 Lake Jetty
- 54 Jacuzzi
- 55 Jacuzzi Deck with Pool Entry
- 56 Cocoon Pods
- 57 Lake Outdoor Shower
- 58 Palm Island
- 59 Lake Pool
- 60 Parc House Pool Wet Deck
- 61 Lakeside
- 62 Parc House Yoga Deck
- 63 The Safari Room
- 64 Children Pool (500MM Deep)
- 65 Water Jets & Spray
- 66 Lake Walk-Over
- 67 Bubble Jets
- 68 Toddler Pool (300MM Deep)

THE PARC HOUSE

- 69 The Reading Room
- 70 The Great Room
- 71 The Picture Room
- 72 The Private Room
- 73 The Horse & Carriage Playground
- 74 The Spun Deck
- 75 Phyllanthus Air-well (2nd Storey)
- 76 BBQ Pavilion (2nd Storey)
- 77 Outdoor Dining (2nd Storey)
- 78 The Parc House Lift

SKY TERRACE

- 79 Seating Planter (2nd Storey)
- 80 Garden Pavilion (2nd Storey)
- 81 Chill-out Deck (2nd Storey)
- 82 Vernonia Heights (2nd Storey)

AUXILIARY

- 83 Bin Centre (Basement)
- 84 Electrical Substation (Basement)
- 85 Generator Set
- 86 Management Office
- 87 MDF Room (Basement)
- 88 Side Gate

Water Tank

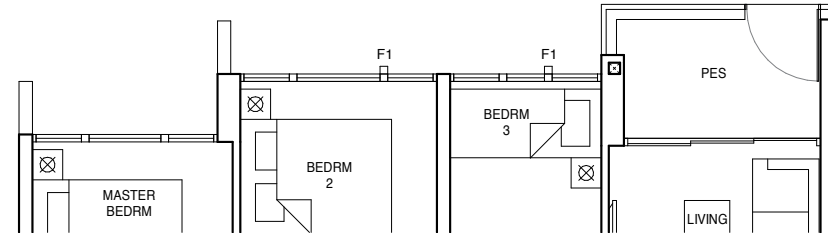
3-BEDROOM DELUXE

TYPE C1-G

872 sqft / 81 sqm

(inclusive of 5 sqm PES & 5 sqm AC Ledge)

Blk 127, #01-17



TYPE C1

872 sqft / 81 sqm

(inclusive of 5 sqm Balcony & 5 sqm AC Ledge)

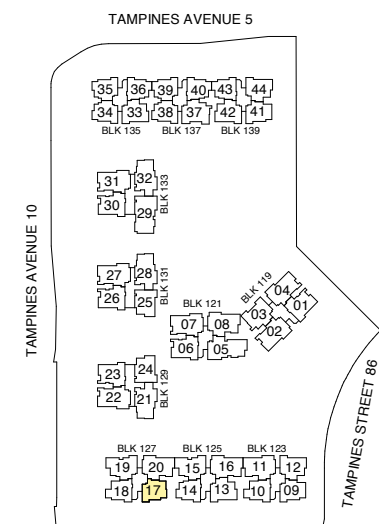
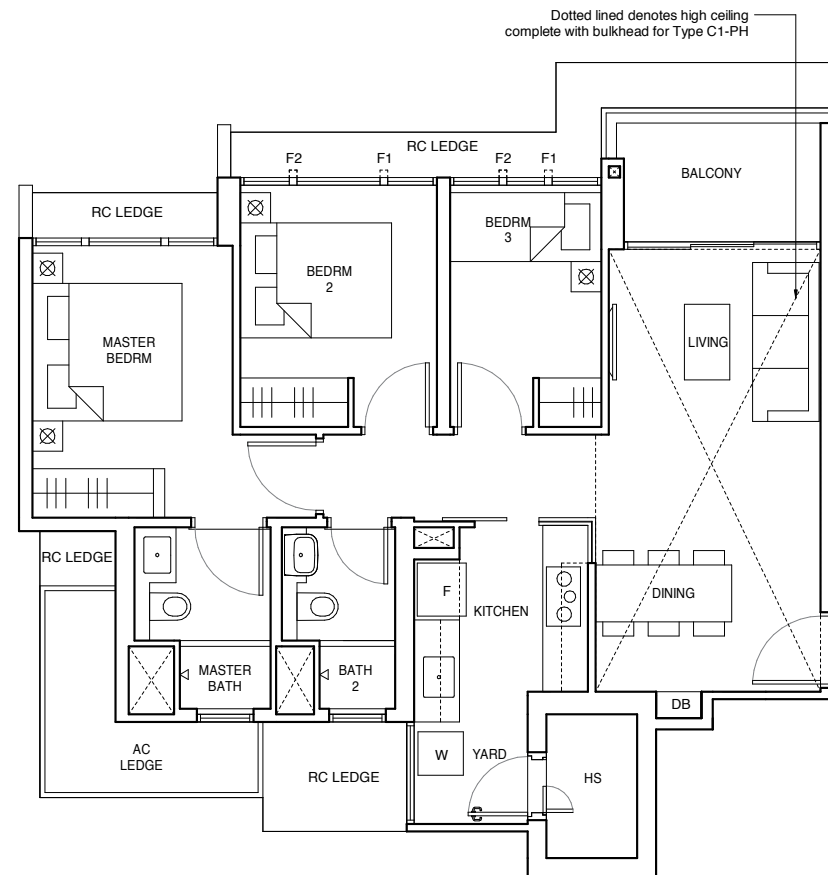
Blk 127, #02-17 to #15-17

TYPE C1-PH

1066 sqft / 99 sqm

(inclusive of 5 sqm Balcony, 5 sqm AC Ledge & 18 sqm void over Living/Dining)

Blk 127, #16-17



LEGEND
 HS - Household Shelter W - Washer F - Fridge DB - Distribution Board * - Mirrored Unit

FULL HEIGHT ALUMINIUM FIN LOCATED AT LEVELS:
 F1 - #01-17, #02-17, #05-17, #06-17, #09-17, #10-17, #13-17 & #14-17
 F2 - #03-17, #04-17, #07-17, #08-17, #11-17, #12-17, #15-17 & #16-17



ALL PLANS ARE SUBJECT TO CHANGES BY THE RELEVANT AUTHORITIES. MEASUREMENTS ARE APPROXIMATE ONLY AND SUBJECT TO FINAL SURVEY. INFORMATION ACCURATE AT THE POINT OF PRINTING.
 BP No : A1720-00006-2019-BP01 DATED 11 AUG 2020, A1720-00006-2019-BP02 DATED 12 OCT 2020



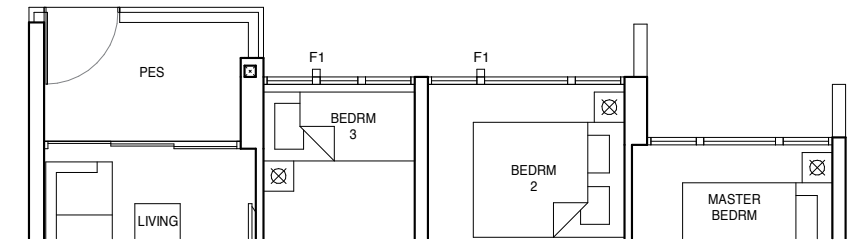
3-BEDROOM DELUXE

TYPE C2-G

893 sqft / 83 sqm

(inclusive of 5 sqm PES & 6 sqm AC Ledge)

Blk 125, #01-14
 Blk 135, #01-36
 Blk 137, #01-40
 Blk 139, #01-43*



TYPE C2

893 sqft / 83 sqm

(inclusive of 5 sqm Balcony & 6 sqm AC Ledge)

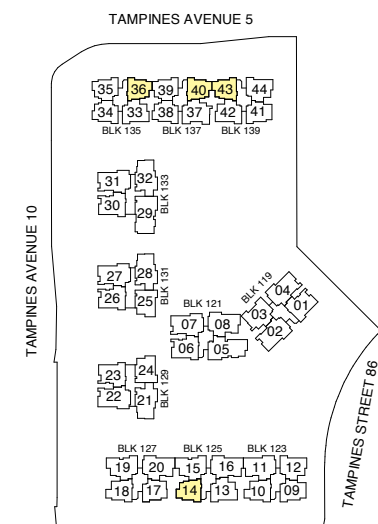
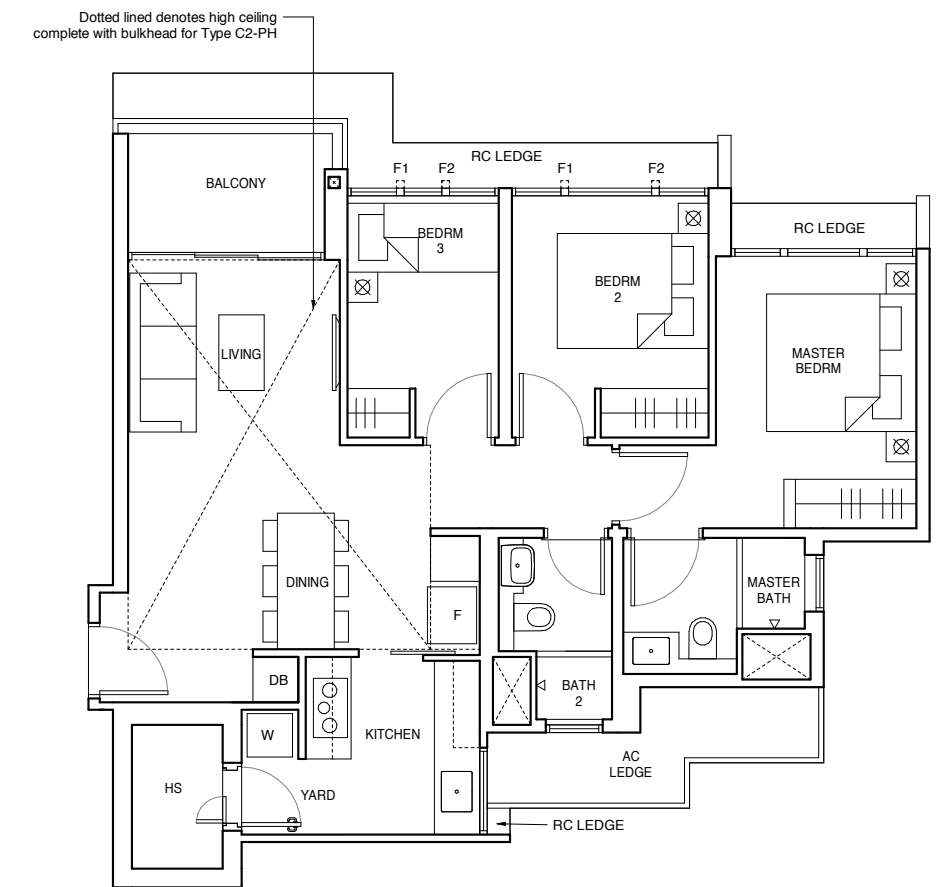
Blk 125, #02-14 to #15-14
 Blk 135, #02-36 to #15-36
 Blk 137, #02-40 to #15-40
 Blk 139, #02-43* to #15-43*

TYPE C2-PH

1098 sqft / 102 sqm

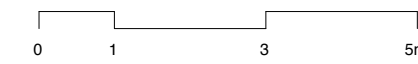
(inclusive of 5 sqm Balcony, 6 sqm AC Ledge & 19 sqm void over Living/Dining)

Blk 125, #16-14
 Blk 135, #16-36
 Blk 137, #16-40
 Blk 139, #16-43*



LEGEND
 HS - Household Shelter W - Washer F - Fridge DB - Distribution Board * - Mirrored Unit

FULL HEIGHT ALUMINIUM FIN LOCATED AT LEVELS:
 F1 - #01-14, #01-36, #01-40, #01-43*, #02-14, #02-36, #02-40, #02-43*, #05-14, #05-36, #05-40, #05-43*, #06-14, #06-36, #06-40, #06-43*, #09-14, #09-36, #09-40, #09-43*, #10-14, #10-36, #10-40, #10-43*, #13-14, #13-36, #13-40, #13-43*, #14-14, #14-36, #14-40 & #14-43*
 F2 - #03-14, #03-36, #03-40, #03-43*, #04-14, #04-36, #04-40, #04-43*, #07-14, #07-36, #07-40, #07-43*, #08-14, #08-36, #08-40, #08-43*, #11-14, #11-36, #11-40, #11-43*, #12-14, #12-36, #12-40, #12-43*, #15-14, #15-36, #15-40, #15-43*, #16-14, #16-36, #16-40 & #16-43*



ALL PLANS ARE SUBJECT TO CHANGES BY THE RELEVANT AUTHORITIES. MEASUREMENTS ARE APPROXIMATE ONLY AND SUBJECT TO FINAL SURVEY. INFORMATION ACCURATE AT THE POINT OF PRINTING.
 BP No : A1720-00006-2019-BP01 DATED 11 AUG 2020, A1720-00006-2019-BP02 DATED 12 OCT 2020



3-BEDROOM PREMIUM

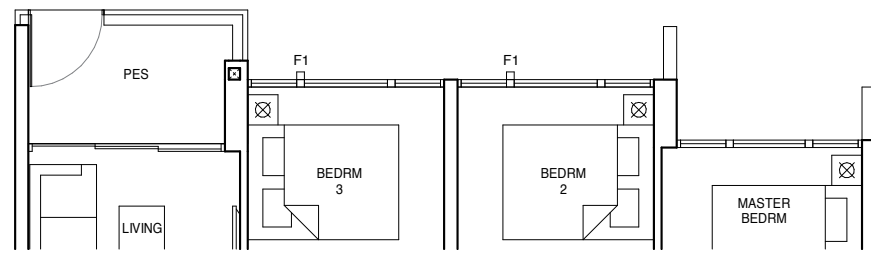
3-BEDROOM PREMIUM

TYPE C3-G

926 sqft / 86 sqm

(inclusive of 5 sqm PES & 6 sqm AC Ledge)

Blk 135, #01-34
 #01-35*
 Blk 137, #01-38
 #01-39*

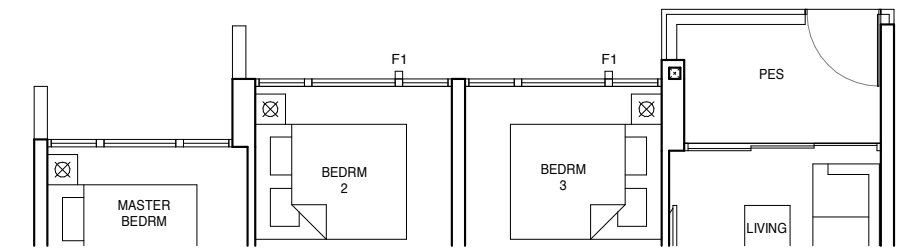


TYPE C4-G

926 sqft / 86 sqm

(inclusive of 5 sqm PES & 5 sqm AC Ledge)

Blk 123, #01-09
 Blk 139, #01-41



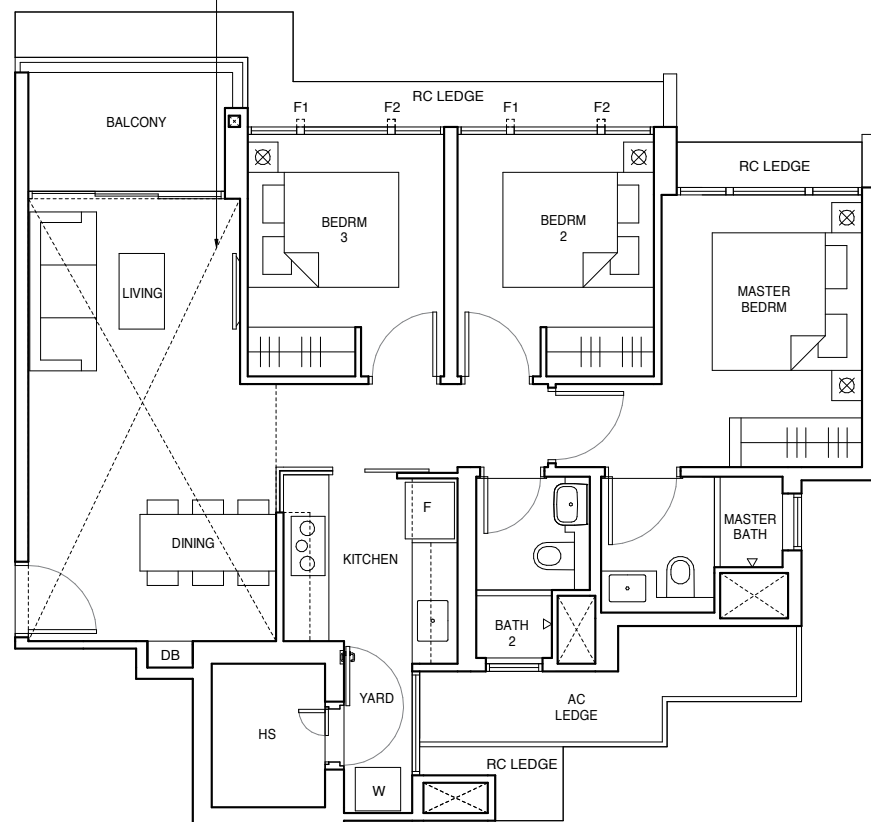
TYPE C3

926 sqft / 86 sqm

(inclusive of 5 sqm Balcony & 6 sqm AC Ledge)

Blk 135, #02-34 to #15-34
 #02-35* to #15-35*
 Blk 137, #02-38 to #15-38
 #02-39* to #15-39*

Dotted lined denotes high ceiling complete with bulkhead for Type C3-PH



TYPE C3-PH

1130 sqft / 105 sqm

(inclusive of 5 sqm Balcony, 6 sqm AC Ledge & 19 sqm void over Living/Dining)

Blk 135, #16-34
 #16-35*
 Blk 137, #16-38
 #16-39*

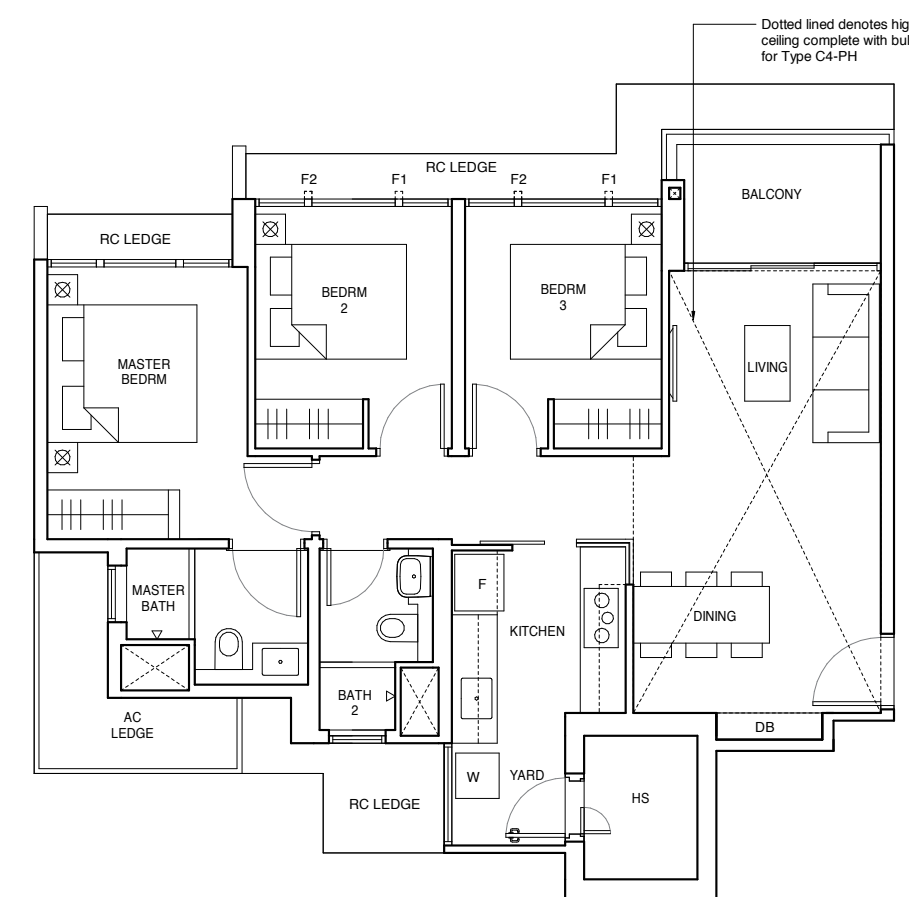
TYPE C4

926 sqft / 86 sqm

(inclusive of 5 sqm Balcony & 5 sqm AC Ledge)

Blk 123, #02-09 to #15-09
 Blk 139, #02-41 to #15-41

Dotted lined denotes high ceiling complete with bulkhead for Type C4-PH



TYPE C4-PH

1130 sqft / 105 sqm

(inclusive of 5 sqm Balcony, 5 sqm AC Ledge & 19 sqm void over Living/Dining)

Blk 123, #16-09
 Blk 139, #16-41



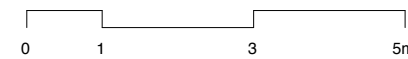
LEGEND

HS - Household Shelter W - Washer F - Fridge DB - Distribution Board * - Mirrored Unit

FULL HEIGHT ALUMINIUM FIN LOCATED AT LEVELS:

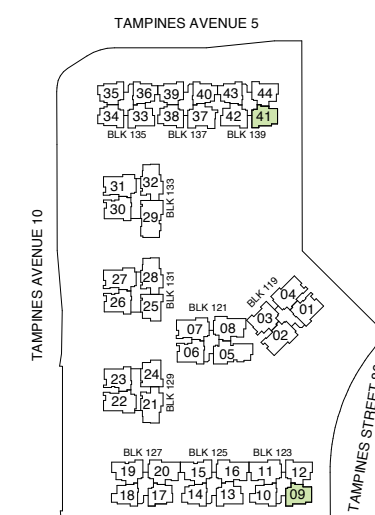
F1 - #01-34, #01-35*, #01-38, #01-39*, #02-34, #02-35*, #02-38, #02-39*, #05-34, #05-35*, #05-38, #05-39*, #06-34, #06-35*, #06-38, #06-39*, #09-34, #09-35*, #09-38, #09-39*, #10-34, #10-35*, #10-38, #10-39*, #13-34, #13-35*, #13-38, #13-39*, #14-34, #14-35*, #14-38 & #14-39*

F2 - #03-34, #03-35*, #03-38, #03-39*, #04-34, #04-35*, #04-38, #04-39*, #07-34, #07-35*, #07-38, #07-39*, #08-34, #08-35*, #08-38, #08-39*, #11-34, #11-35*, #11-38, #11-39*, #12-34, #12-35*, #12-38, #12-39*, #15-34, #15-35*, #15-38, #15-39*, #16-34, #16-35*, #16-38 & #16-39*



ALL PLANS ARE SUBJECT TO CHANGES BY THE RELEVANT AUTHORITIES. MEASUREMENTS ARE APPROXIMATE ONLY AND SUBJECT TO FINAL SURVEY. INFORMATION ACCURATE AT THE POINT OF PRINTING.
 BP No : A1720-00006-2019-BP01 DATED 11 AUG 2020, A1720-00006-2019-BP02 DATED 12 OCT 2020

KEY PLAN
 NOT TO SCALE



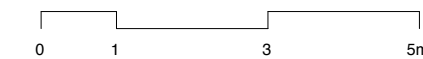
LEGEND

HS - Household Shelter W - Washer F - Fridge DB - Distribution Board * - Mirrored Unit

FULL HEIGHT ALUMINIUM FIN LOCATED AT LEVELS:

F1 - #01-09, #01-41, #02-09, #02-41, #05-09, #05-41, #06-09, #06-41, #09-09, #09-41, #10-09, #10-41, #13-09, #13-41, #14-09 & #14-41

F2 - #03-09, #03-41, #04-09, #04-41, #07-09, #07-41, #08-09, #08-41, #11-09, #11-41, #12-09, #12-41, #15-09, #15-41, #16-09 & #16-41



ALL PLANS ARE SUBJECT TO CHANGES BY THE RELEVANT AUTHORITIES. MEASUREMENTS ARE APPROXIMATE ONLY AND SUBJECT TO FINAL SURVEY. INFORMATION ACCURATE AT THE POINT OF PRINTING.
 BP No : A1720-00006-2019-BP01 DATED 11 AUG 2020, A1720-00006-2019-BP02 DATED 12 OCT 2020

KEY PLAN
 NOT TO SCALE

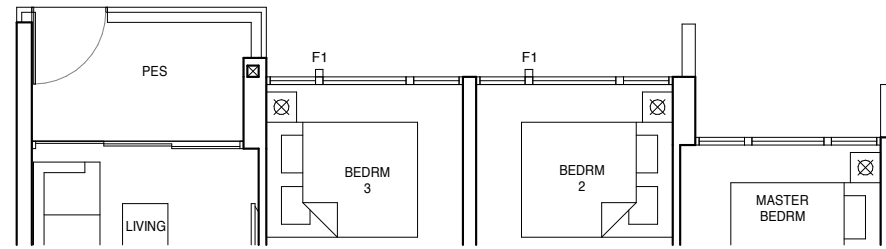
3-BEDROOM PREMIUM

TYPE C5-G

936 sqft / 87 sqm

(inclusive of 5 sqm PES & 4 sqm AC Ledge)

Blk 123, #01-10
Blk 127, #01-18



TYPE C5

936 sqft / 87 sqm

(inclusive of 5 sqm Balcony & 4 sqm AC Ledge)

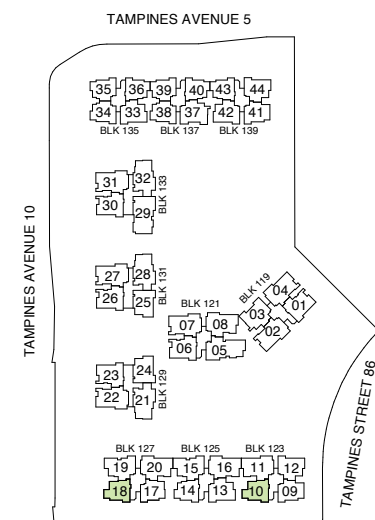
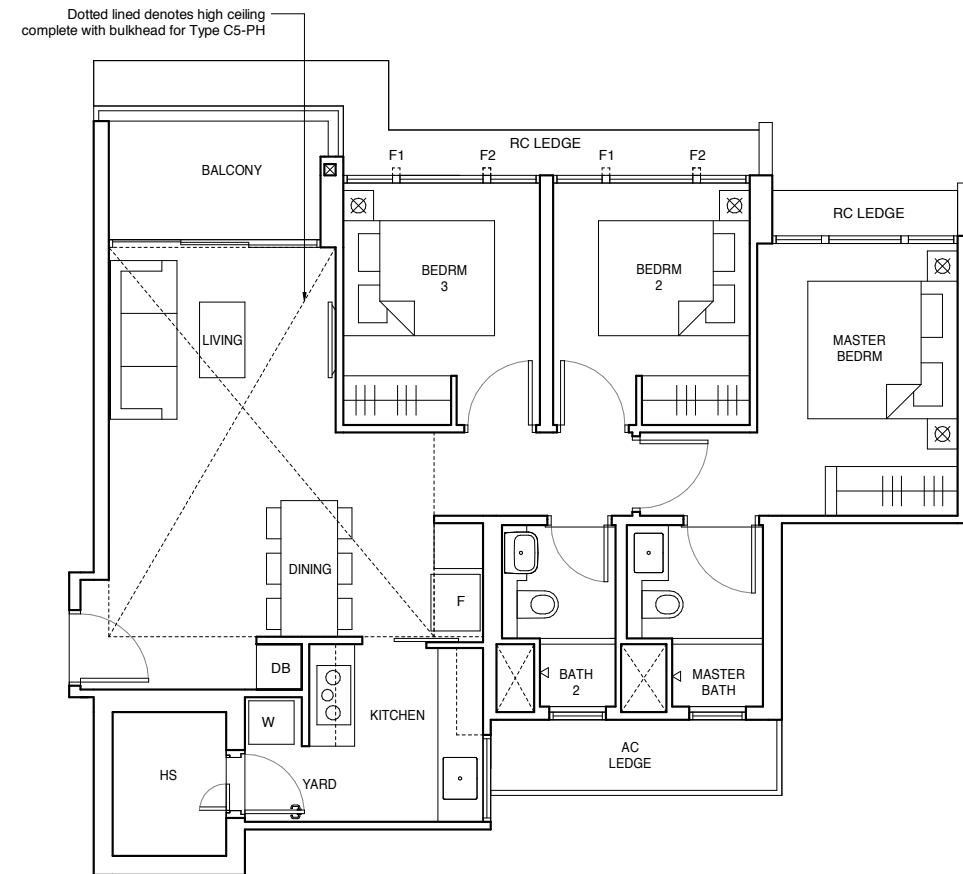
Blk 123, #02-10 to #15-10
Blk 127, #02-18 to #15-18

TYPE C5-PH

1152 sqft / 107 sqm

(inclusive of 5 sqm Balcony, 4 sqm AC Ledge & 20 sqm void over Living/Dining)

Blk 123, #16-10
Blk 127, #16-18



KEY PLAN
NOT TO SCALE

LEGEND

HS - Household Shelter W - Washer F - Fridge DB - Distribution Board * - Mirrored Unit

FULL HEIGHT ALUMINIUM FIN LOCATED AT LEVELS:

F1 - #01-10, #01-18, #02-10, #02-18, #05-10, #05-18, #06-10, #06-18, #09-10, #09-18, #10-10, #10-18, #13-10, #13-18, #14-10 & #14-18

F2 - #03-10, #03-18, #04-10, #04-18, #07-10, #07-18, #08-10, #08-18, #11-10, #11-18, #12-10, #12-18, #15-10, #15-18, #16-10 & #16-18

0 1 3 5m

ALL PLANS ARE SUBJECT TO CHANGES BY THE RELEVANT AUTHORITIES. MEASUREMENTS ARE APPROXIMATE ONLY AND SUBJECT TO FINAL SURVEY. INFORMATION ACCURATE AT THE POINT OF PRINTING.
BP No : A1720-00006-2019-BP01 DATED 11 AUG 2020, A1720-00006-2019-BP02 DATED 12 OCT 2020

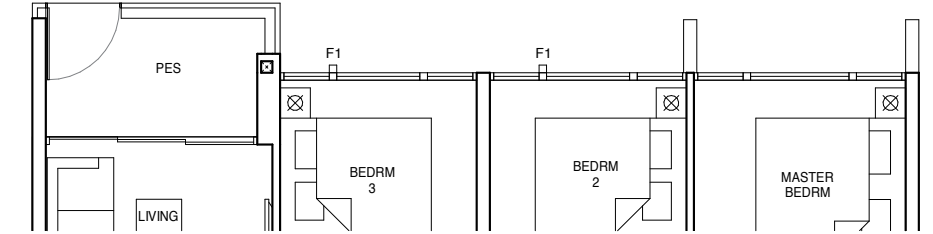
3-BEDROOM LUXURY

TYPE C6-G

990 sqft / 92 sqm

(inclusive of 5 sqm PES & 5 sqm AC Ledge)

Blk 123, #01-12
Blk 125, #01-13*
Blk 135, #01-33*
Blk 139, #01-42
#01-44



TYPE C6

990 sqft / 92 sqm

(inclusive of 5 sqm Balcony & 5 sqm AC Ledge)

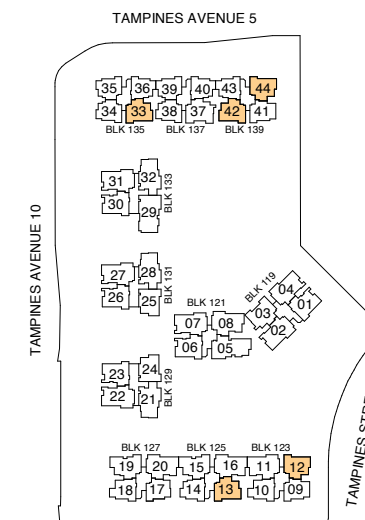
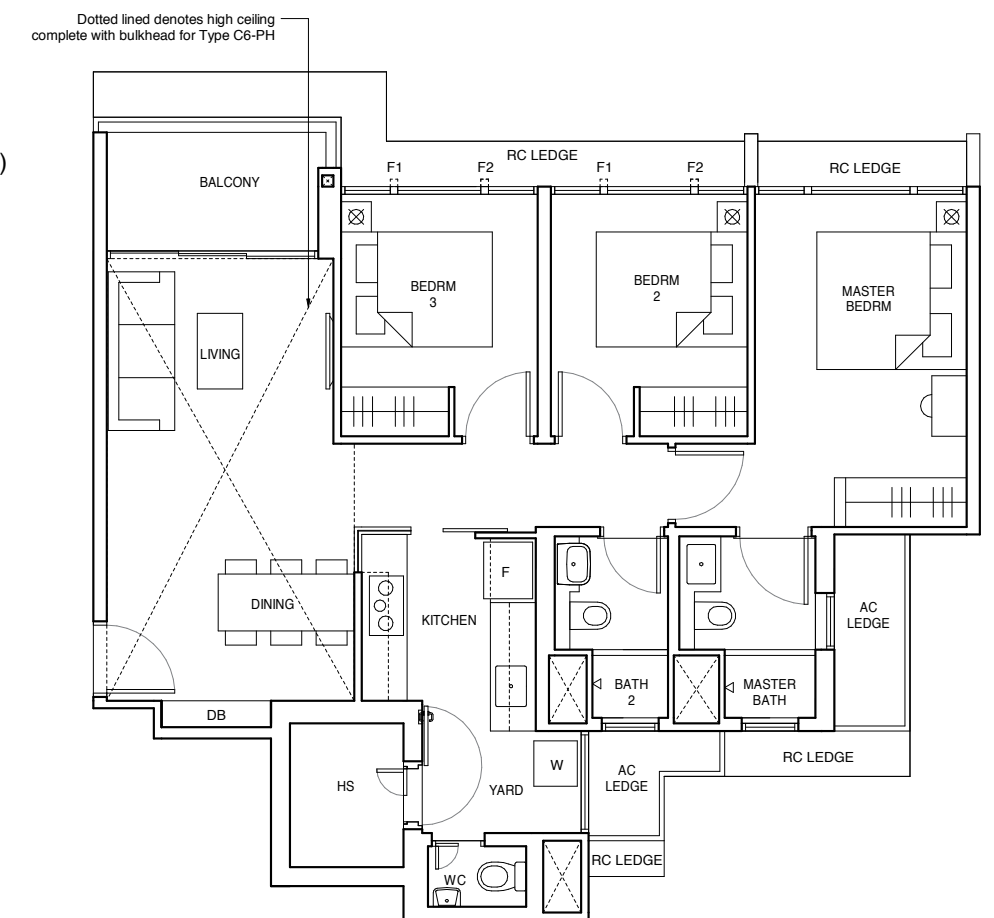
Blk 123, #02-12 to #15-12
Blk 125, #02-13* to #15-13*
Blk 135, #02-33* to #15-33*
Blk 139, #02-42 to #15-42
#02-44 to #15-44

TYPE C6-PH

1206 sqft / 112 sqm

(inclusive of 5 sqm Balcony, 5 sqm AC Ledge & 20 sqm void over Living/Dining)

Blk 123, #16-12
Blk 125, #16-13*
Blk 135, #16-33*
Blk 139, #16-42
#16-44



KEY PLAN
NOT TO SCALE

LEGEND

HS - Household Shelter W - Washer F - Fridge DB - Distribution Board * - Mirrored Unit

FULL HEIGHT ALUMINIUM FIN LOCATED AT LEVELS:

F1 - #01-12, #01-13*, #01-33*, #01-42, #01-44, #02-12, #02-13*, #02-33*, #02-42, #02-44, #05-12, #05-13*, #05-33*, #05-42, #05-44, #06-12, #06-13*, #06-33*, #06-42, #06-44, #09-12, #09-13*, #09-33*, #09-42, #09-44, #10-12, #10-13*, #10-33*, #10-42, #10-44, #13-12, #13-13*, #13-33*, #13-42, #13-44, #14-12, #14-13*, #14-33*, #14-42 & #14-44

F2 - #03-12, #03-13*, #03-33*, #03-42, #03-44, #04-12, #04-13*, #04-33*, #04-42, #04-44, #07-12, #07-13*, #07-33*, #07-42, #07-44, #08-12, #08-13*, #08-33*, #08-42, #08-44, #11-12, #11-13*, #11-33*, #11-42, #11-44, #12-12, #12-13*, #12-33*, #12-42, #12-44, #15-12, #15-13*, #15-33*, #15-42, #15-44, #16-12, #16-13*, #16-33*, #16-42 & #16-44

0 1 3 5m

ALL PLANS ARE SUBJECT TO CHANGES BY THE RELEVANT AUTHORITIES. MEASUREMENTS ARE APPROXIMATE ONLY AND SUBJECT TO FINAL SURVEY. INFORMATION ACCURATE AT THE POINT OF PRINTING.
BP No : A1720-00006-2019-BP01 DATED 11 AUG 2020, A1720-00006-2019-BP02 DATED 12 OCT 2020

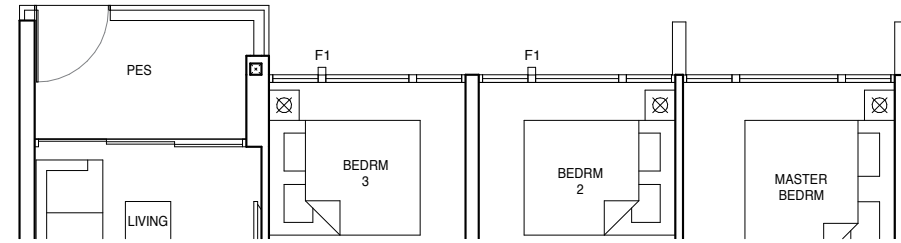
3-BEDROOM LUXURY

TYPE C7-G

1023 sqft / 95 sqm

(inclusive of 5 sqm PES & 5 sqm AC Ledge)

Blk 129, #01-24*
Blk 131, #01-25



TYPE C7

1023 sqft / 95 sqm

(inclusive of 5 sqm Balcony & 5 sqm AC Ledge)

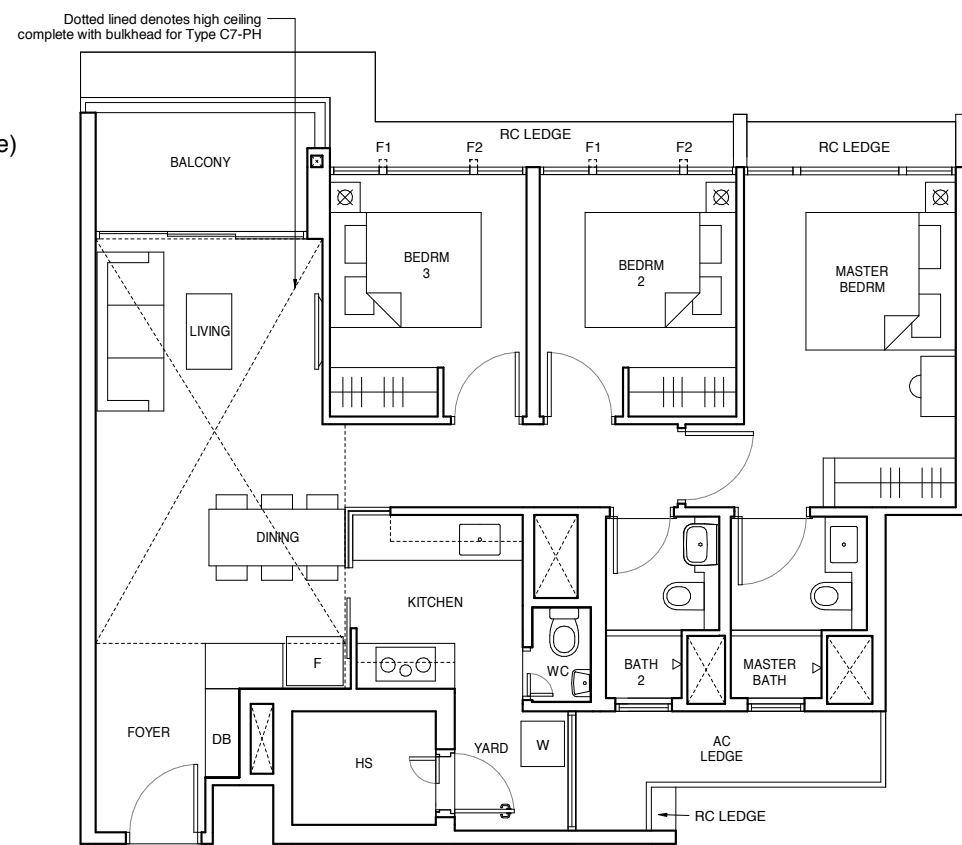
Blk 129, #02-24* to #15-24*
Blk 131, #02-25 to #15-25

TYPE C7-PH

1216 sqft / 113 sqm

(inclusive of 5 sqm Balcony, 5 sqm AC Ledge & 18 sqm void over Living/Dining)

Blk 129, #16-24*
Blk 131, #16-25



KEY PLAN
NOT TO SCALE

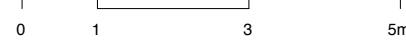
LEGEND

HS - Household Shelter W - Washer F - Fridge DB - Distribution Board * - Mirrored Unit

FULL HEIGHT ALUMINIUM FIN LOCATED AT LEVELS:

F1 - #01-24*, #01-25, #02-24*, #02-25, #05-24*, #05-25, #06-24*, #06-25, #09-24*, #09-25, #10-24*, #10-25, #13-24*, #13-25, #14-24* & #14-25

F2 - #03-24*, #03-25, #04-24*, #04-25, #07-24*, #07-25, #08-24*, #08-25, #11-24*, #11-25, #12-24*, #12-25, #15-24*, #15-25, #16-24* & #16-25



ALL PLANS ARE SUBJECT TO CHANGES BY THE RELEVANT AUTHORITIES. MEASUREMENTS ARE APPROXIMATE ONLY AND SUBJECT TO FINAL SURVEY. INFORMATION ACCURATE AT THE POINT OF PRINTING.
BP No : A1720-00006-2019-BP01 DATED 11 AUG 2020, A1720-00006-2019-BP02 DATED 12 OCT 2020

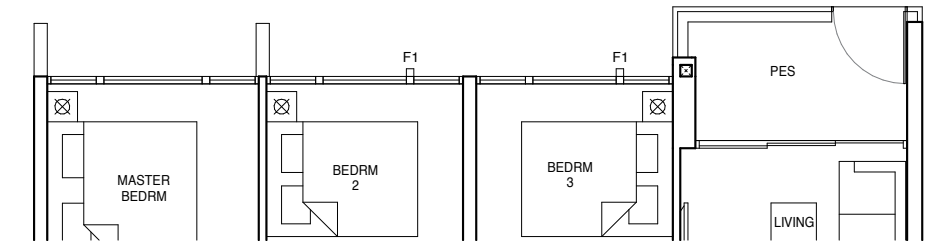
3-BEDROOM LUXURY

TYPE C8-G

1055 sqft / 98 sqm

(inclusive of 5 sqm PES & 6 sqm AC Ledge)

Blk 119, #02-01
Blk 121, #01-06*
Blk 129, #01-23
Blk 131, #01-26*
Blk 133, #01-30*



TYPE C8

1055 sqft / 98 sqm

(inclusive of 5 sqm Balcony & 6 sqm AC Ledge)

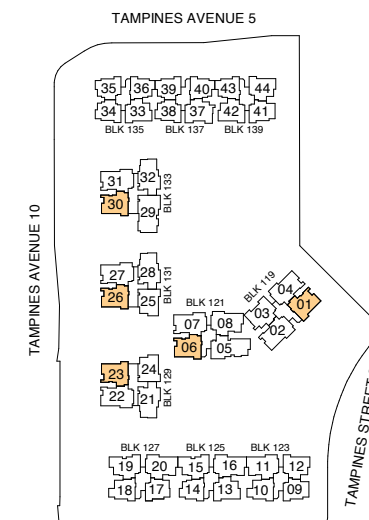
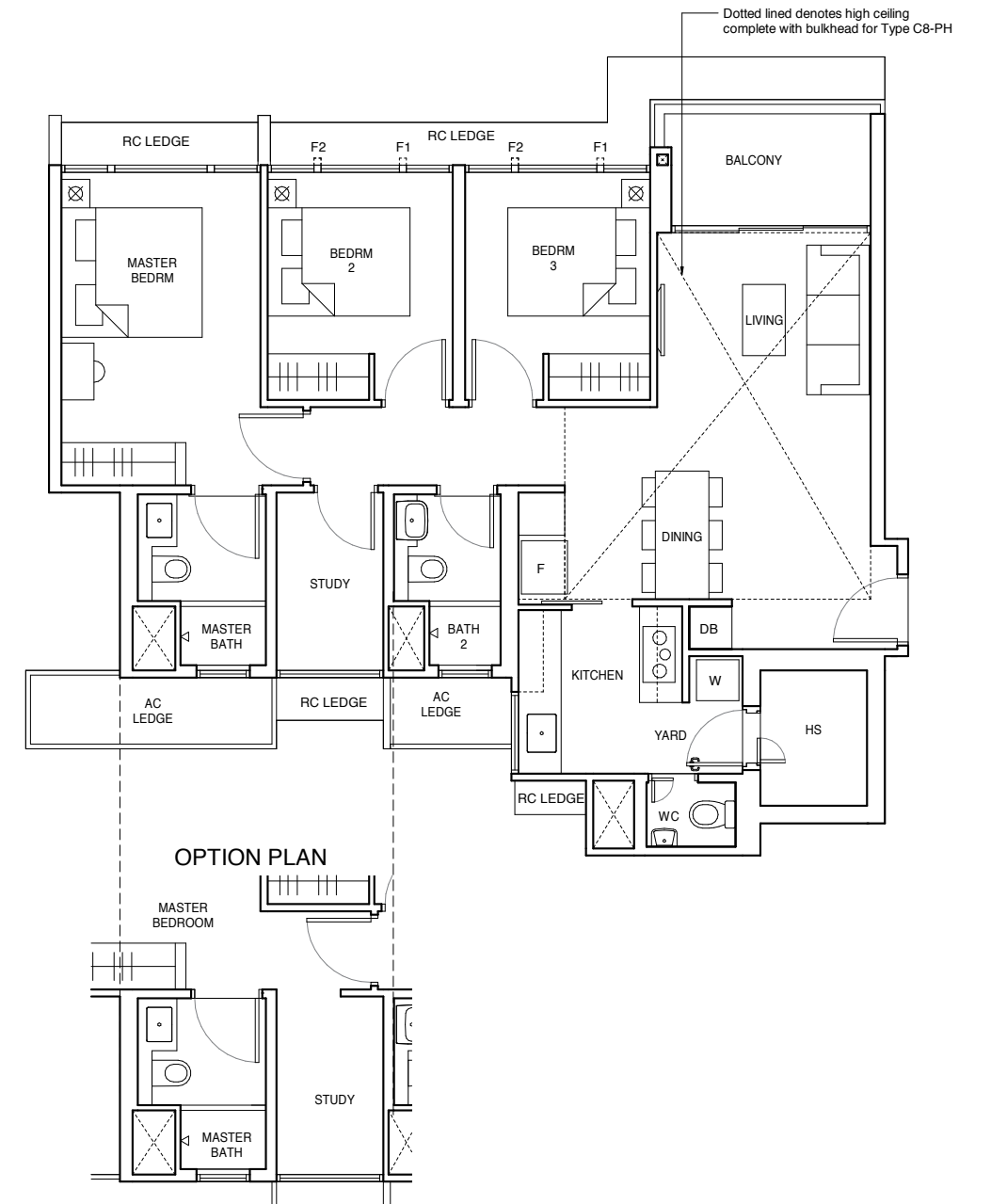
Blk 119, #03-01 to #15-01
Blk 121, #02-06* to #15-06*
Blk 129, #02-23 to #15-23
Blk 131, #02-26* to #15-26*
Blk 133, #02-30* to #15-30*

TYPE C8-PH

1270 sqft / 118 sqm

(inclusive of 5 sqm Balcony, 6 sqm AC Ledge & 20 sqm void over Living/Dining)

Blk 119, #16-01
Blk 121, #16-06*
Blk 129, #16-23
Blk 131, #16-26*
Blk 133, #16-30*



KEY PLAN
NOT TO SCALE

LEGEND

HS - Household Shelter W - Washer F - Fridge DB - Distribution Board * - Mirrored Unit

FULL HEIGHT ALUMINIUM FIN LOCATED AT LEVELS:

F1 - #01-06*, #01-23, #01-26*, #01-30*, #02-01, #02-06*, #02-23, #02-26*, #02-30*, #05-01, #05-06*, #05-23, #05-26*, #05-30*, #06-01, #06-06*, #06-23, #06-26*, #06-30*, #09-01, #09-06*, #09-23, #09-26*, #09-30*, #10-01, #10-06*, #10-23, #10-26*, #10-30*, #13-01, #13-06*, #13-23, #13-26*, #13-30*, #14-01, #14-06*, #14-23, #14-26* & #14-30*

F2 - #03-01, #03-06*, #03-23, #03-26*, #03-30*, #04-01, #04-06*, #04-23, #04-26*, #04-30*, #07-01, #07-06*, #07-23, #07-26*, #07-30*, #08-01, #08-06*, #08-23, #08-26*, #08-30*, #11-01, #11-06*, #11-23, #11-26*, #11-30*, #12-01, #12-06*, #12-23, #12-26*, #12-30*, #15-01, #15-06*, #15-23, #15-26*, #15-30*, #16-01, #16-06*, #16-23, #16-26* & #16-30*



ALL PLANS ARE SUBJECT TO CHANGES BY THE RELEVANT AUTHORITIES. MEASUREMENTS ARE APPROXIMATE ONLY AND SUBJECT TO FINAL SURVEY. INFORMATION ACCURATE AT THE POINT OF PRINTING.
BP No : A1720-00006-2019-BP01 DATED 11 AUG 2020, A1720-00006-2019-BP02 DATED 12 OCT 2020

4-BEDROOM PREMIUM

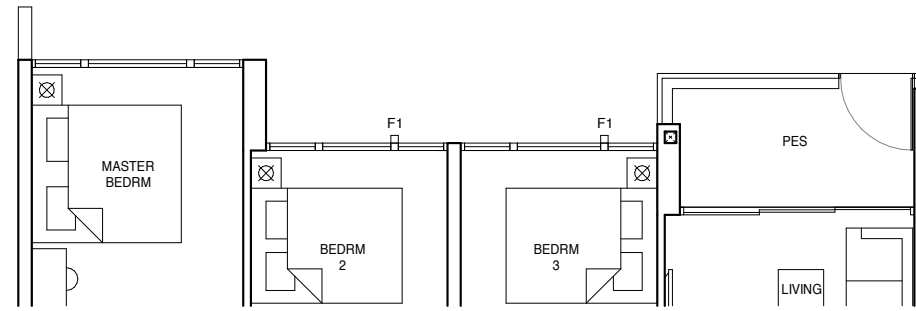
4-BEDROOM PREMIUM

TYPE D1-G

1109 sqft / 103 sqm

(inclusive of 6 sqm PES & 5 sqm AC Ledge)

Blk 119, #01-03
Blk 137, #01-37

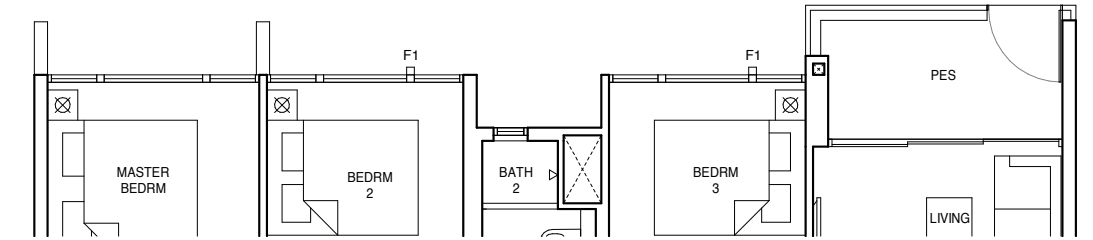


TYPE D2-G

1119 sqft / 104 sqm

(inclusive of 6 sqm PES & 6 sqm AC Ledge)

Blk 125, #01-15
Blk 127, #01-19



TYPE D1

1109 sqft / 103 sqm

(inclusive of 6 sqm Balcony & 5 sqm AC Ledge)

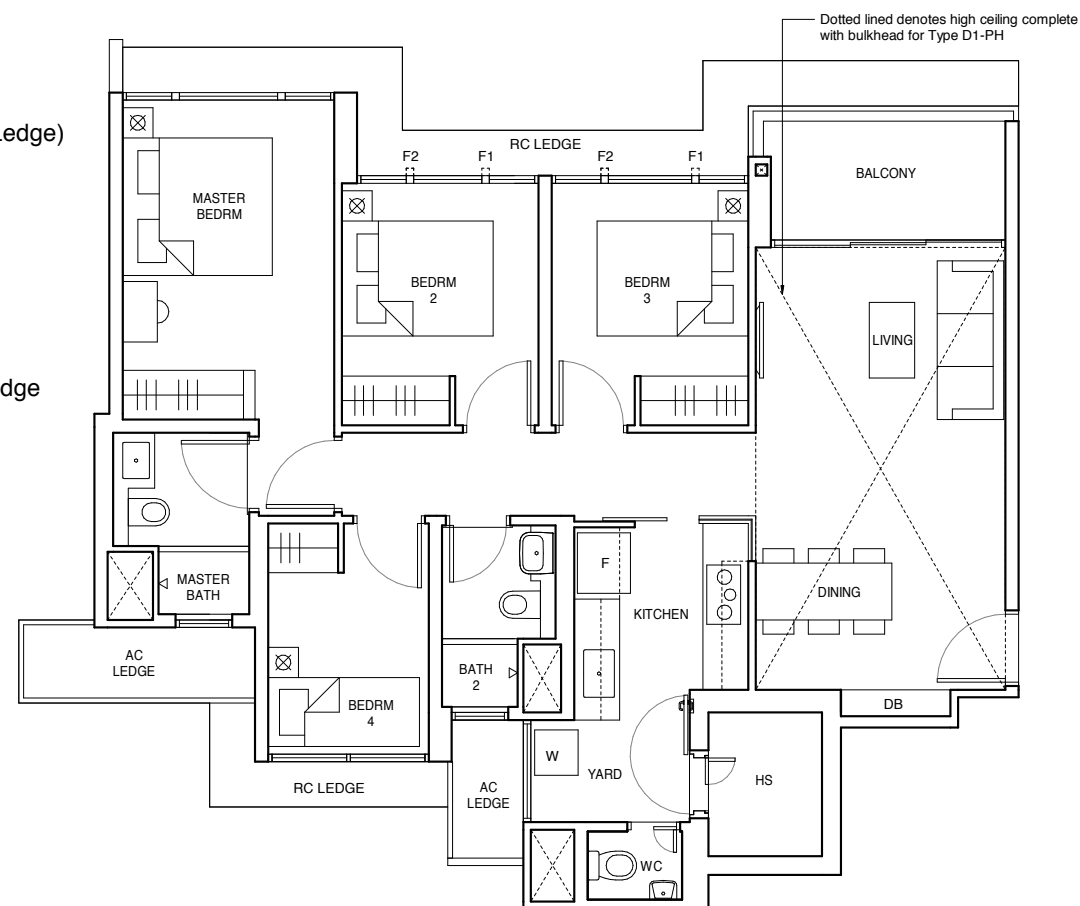
Blk 119, #02-03 to #15-03
Blk 137, #02-37 to #15-37

TYPE D1-PH

1324 sqft / 123 sqm

(inclusive of 6 sqm Balcony, 5 sqm AC Ledge & 20 sqm void over Living/Dining)

Blk 119, #16-03
Blk 137, #16-37



TYPE D2

1119 sqft / 104 sqm

(inclusive of 6 sqm Balcony & 6 sqm AC Ledge)

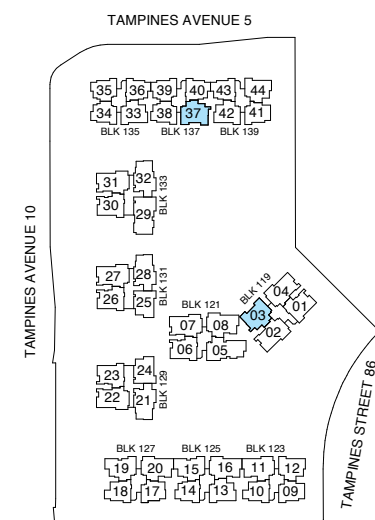
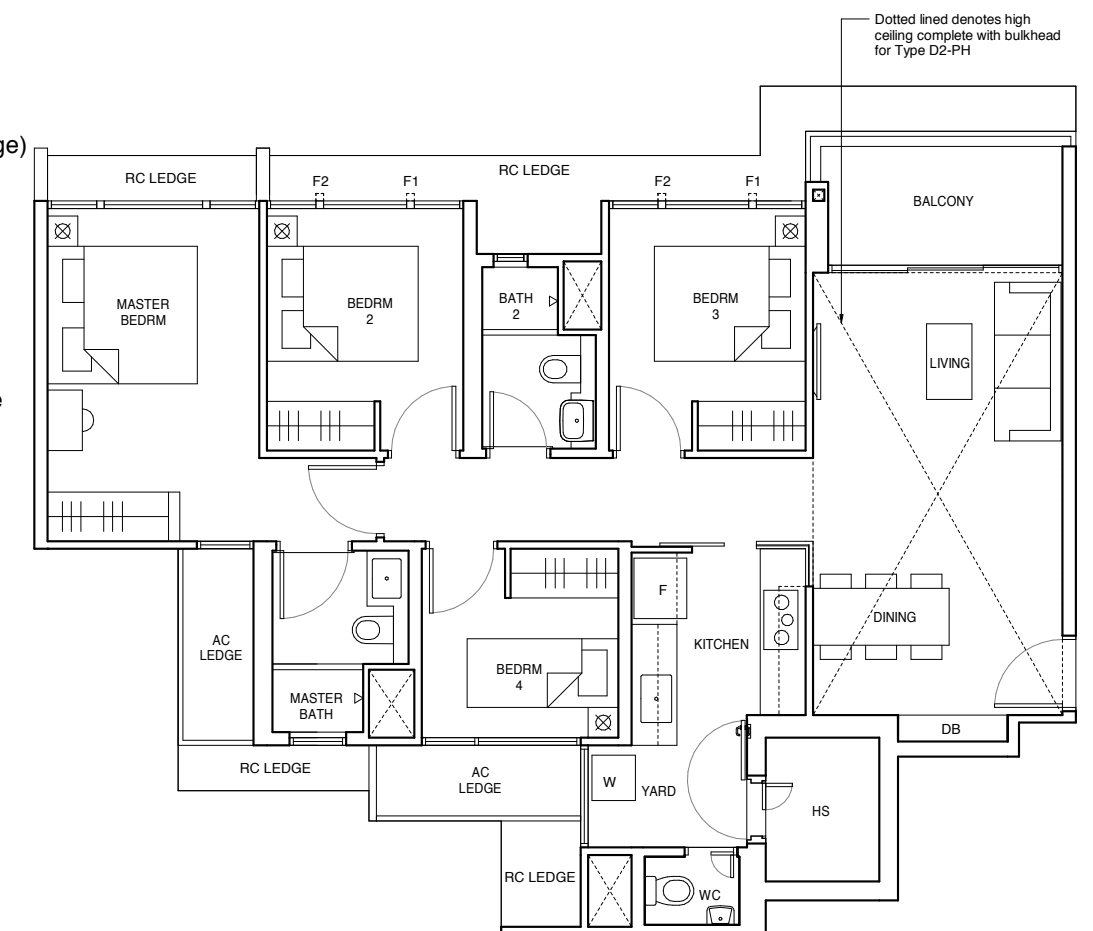
Blk 125, #02-15 to #15-15
Blk 127, #02-19 to #15-19

TYPE D2-PH

1335 sqft / 124 sqm

(inclusive of 6 sqm Balcony, 6 sqm AC Ledge & 20 sqm void over Living/Dining)

Blk 125, #16-15
Blk 127, #16-19



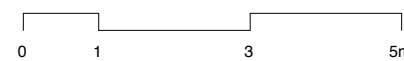
LEGEND

HS - Household Shelter W - Washer F - Fridge DB - Distribution Board * - Mirrored Unit

FULL HEIGHT ALUMINIUM FIN LOCATED AT LEVELS:

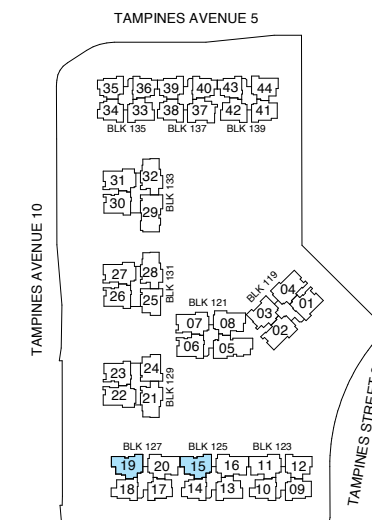
F1 - #01-03, #01-37, #02-03, #02-37, #05-03, #05-37, #06-03, #06-37, #09-03, #09-37, #10-03, #10-37, #13-03, #13-37, #14-03 & #14-37

F2 - #03-03, #03-37, #04-03, #04-37, #07-03, #07-37, #08-03, #08-37, #11-03, #11-37, #12-03, #12-37, #15-03, #15-37, #16-03 & #16-37



ALL PLANS ARE SUBJECT TO CHANGES BY THE RELEVANT AUTHORITIES. MEASUREMENTS ARE APPROXIMATE ONLY AND SUBJECT TO FINAL SURVEY. INFORMATION ACCURATE AT THE POINT OF PRINTING. BP No : A1720-00006-2019-BP01 DATED 11 AUG 2020, A1720-00006-2019-BP02 DATED 12 OCT 2020

KEY PLAN
NOT TO SCALE



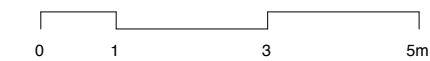
LEGEND

HS - Household Shelter W - Washer F - Fridge DB - Distribution Board * - Mirrored Unit

FULL HEIGHT ALUMINIUM FIN LOCATED AT LEVELS:

F1 - #01-15, #01-19, #02-15, #02-19, #05-15, #05-19, #06-15, #06-19, #09-15, #09-19, #10-15, #10-19, #13-15, #13-19, #14-15 & #14-19

F2 - #03-15, #03-19, #04-15, #04-19, #07-15, #07-19, #08-15, #08-19, #11-15, #11-19, #12-15, #12-19, #15-15, #15-19, #16-15 & #16-19



ALL PLANS ARE SUBJECT TO CHANGES BY THE RELEVANT AUTHORITIES. MEASUREMENTS ARE APPROXIMATE ONLY AND SUBJECT TO FINAL SURVEY. INFORMATION ACCURATE AT THE POINT OF PRINTING. BP No : A1720-00006-2019-BP01 DATED 11 AUG 2020, A1720-00006-2019-BP02 DATED 12 OCT 2020

KEY PLAN
NOT TO SCALE

4-BEDROOM PREMIUM

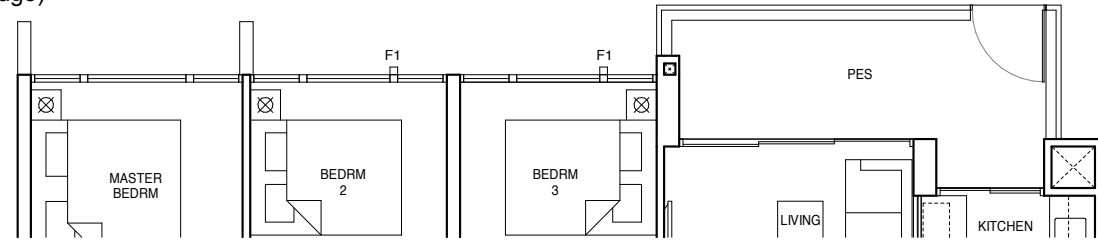
4-BEDROOM PREMIUM

TYPE D3a-G

1206 sqft / 112 sqm

(inclusive of 10 sqm PES & 5 sqm AC Ledge)

- Blk 119, #02-04*
- Blk 121, #01-07
- Blk 129, #01-22*
- Blk 131, #01-27
- Blk 133, #01-31

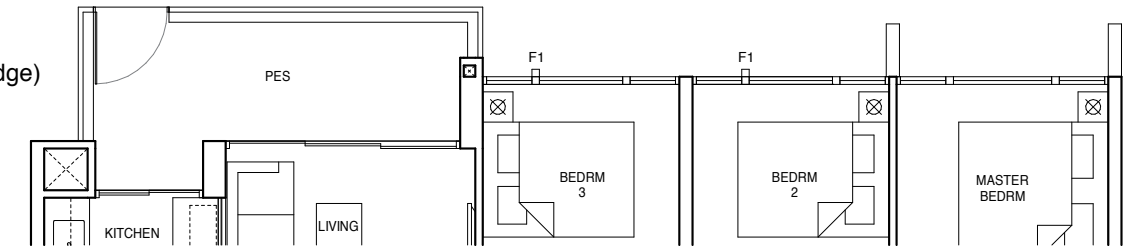


TYPE D3b-G

1206 sqft / 112 sqm

(inclusive of 10 sqm PES & 5 sqm AC Ledge)

- Blk 125, #01-16

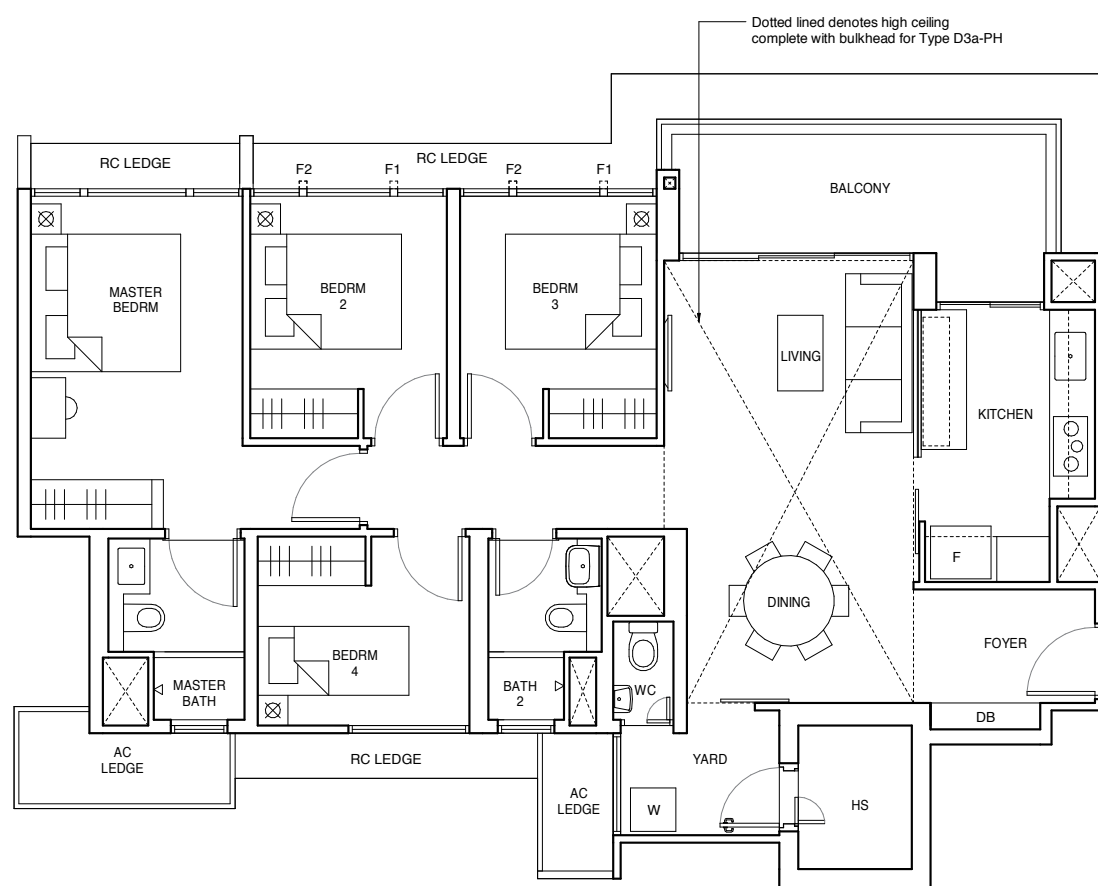


TYPE D3a

1206 sqft / 112 sqm

(inclusive of 10 sqm Balcony & 5 sqm AC Ledge)

- Blk 119, #03-02* to #15-02*
- #03-04* to #15-04*
- Blk 121, #02-07 to #15-07
- Blk 129, #02-22* to #15-22*
- Blk 131, #02-27 to #15-27
- Blk 133, #02-31 to #15-31



TYPE D3a-PH

1421 sqft / 132 sqm

(inclusive of 10 sqm Balcony, 5 sqm AC Ledge & 20 sqm void over Living/Dining)

- Blk 119, #16-02*
- #16-04*
- Blk 121, #16-07
- Blk 129, #16-22*
- Blk 131, #16-27
- Blk 133, #16-31

TYPE D3b

1206 sqft / 112 sqm

(inclusive of 10 sqm Balcony & 5 sqm AC Ledge)

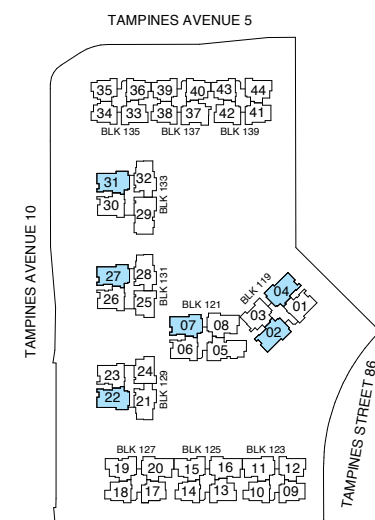
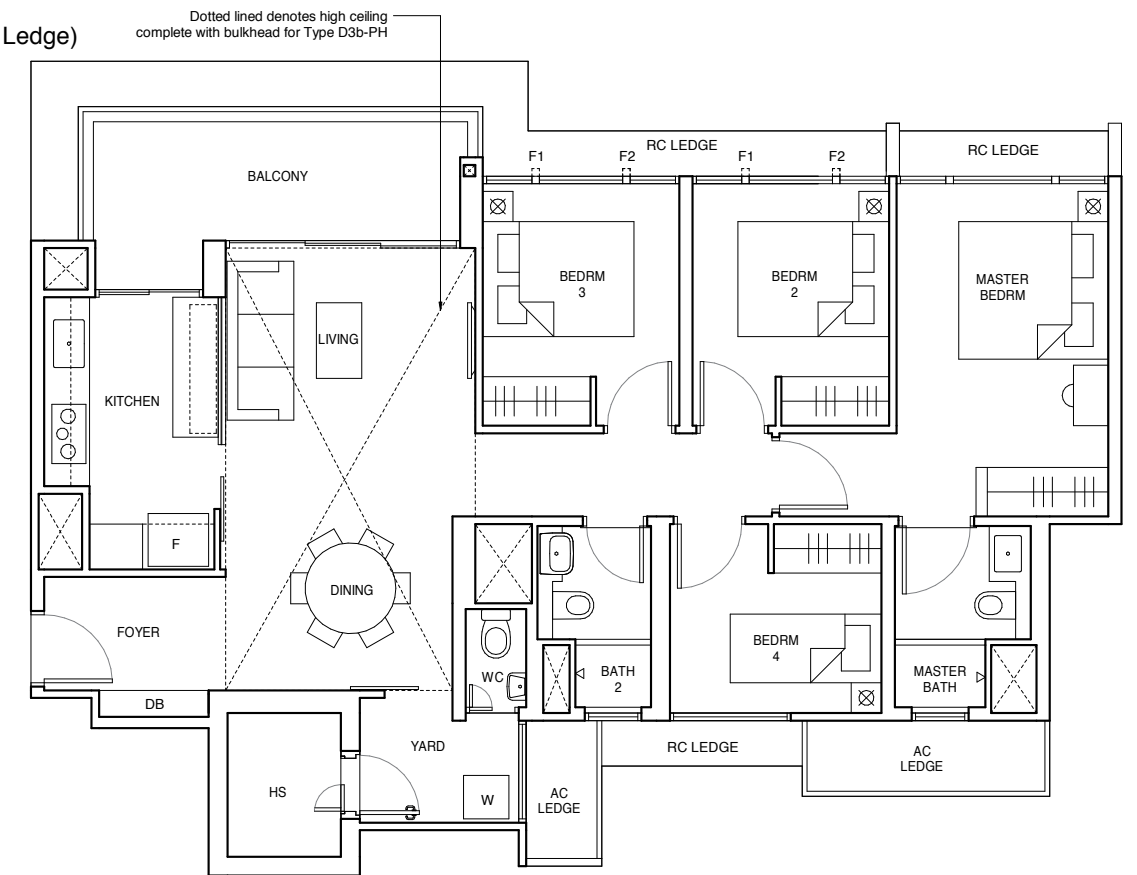
- Blk 125, #02-16 to #15-16

TYPE D3b-PH

1421 sqft / 132 sqm

(inclusive of 10 sqm Balcony, 5 sqm AC Ledge & 20 sqm void over Living/Dining)

- Blk 125, #16-16

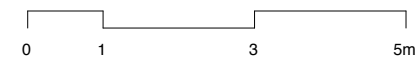


LEGEND

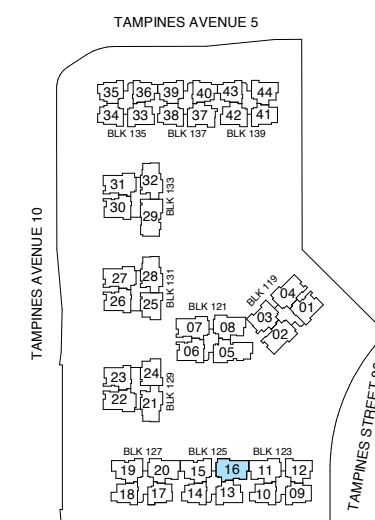
HS - Household Shelter W - Washer F - Fridge DB - Distribution Board * - Mirrored Unit

FULL HEIGHT ALUMINIUM FIN LOCATED AT LEVELS:

F1 - #01-07, #01-22*, #01-27, #01-31, #02-04*, #02-07, #02-22*, #02-27, #02-31, #05-02*, #05-04*, #05-07, #05-22*, #05-27, #05-31, #06-02*, #06-04*, #06-07, #06-22*, #06-27, #06-31, #09-02*, #09-04*, #09-07, #09-22*, #09-27, #09-31, #10-02*, #10-04*, #10-07, #10-22*, #10-27, #10-31, #13-02*, #13-04*, #13-07, #13-22*, #13-27, #13-31, #14-02*, #14-04*, #14-07, #14-22*, #14-27 & #14-31
 F2 - #03-02*, #03-04*, #03-07, #03-22*, #03-27, #03-31, #04-02*, #04-04*, #04-07, #04-22*, #04-27, #04-31, #07-02*, #07-04*, #07-07, #07-22*, #07-27, #07-31, #08-02*, #08-04*, #08-07, #08-22*, #08-27, #08-31, #11-02*, #11-04*, #11-07, #11-22*, #11-27, #11-31, #12-02*, #12-04*, #12-07, #12-22*, #12-27, #12-31, #15-02*, #15-04*, #15-07, #15-22*, #15-27, #15-31, #16-02*, #16-04*, #16-07, #16-22*, #16-27 & #16-31



ALL PLANS ARE SUBJECT TO CHANGES BY THE RELEVANT AUTHORITIES. MEASUREMENTS ARE APPROXIMATE ONLY AND SUBJECT TO FINAL SURVEY. INFORMATION ACCURATE AT THE POINT OF PRINTING.
 BP No : A1720-00006-2019-BP01 DATED 11 AUG 2020, A1720-00006-2019-BP02 DATED 12 OCT 2020

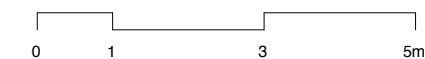


LEGEND

HS - Household Shelter W - Washer F - Fridge DB - Distribution Board * - Mirrored Unit

F1 - #01-16, #02-16, #05-16, #06-16, #09-16, #10-16, #13-16 & #14-16

F2 - #03-16, #04-16, #07-16, #08-16, #11-16, #12-16, #15-16 & #16-16



ALL PLANS ARE SUBJECT TO CHANGES BY THE RELEVANT AUTHORITIES. MEASUREMENTS ARE APPROXIMATE ONLY AND SUBJECT TO FINAL SURVEY. INFORMATION ACCURATE AT THE POINT OF PRINTING.
 BP No : A1720-00006-2019-BP01 DATED 11 AUG 2020, A1720-00006-2019-BP02 DATED 12 OCT 2020



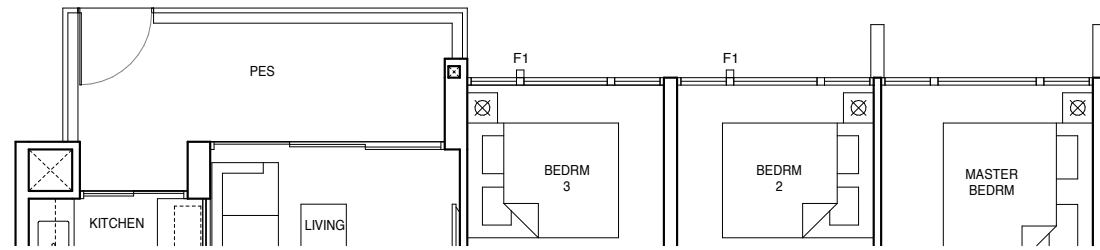
4-BEDROOM PREMIUM

TYPE D4-G

1227 sqft / 114 sqm

(inclusive of 10 sqm PES & 5 sqm AC Ledge)

Blk 121, #01-08
Blk 123, #01-11*
Blk 127, #01-20

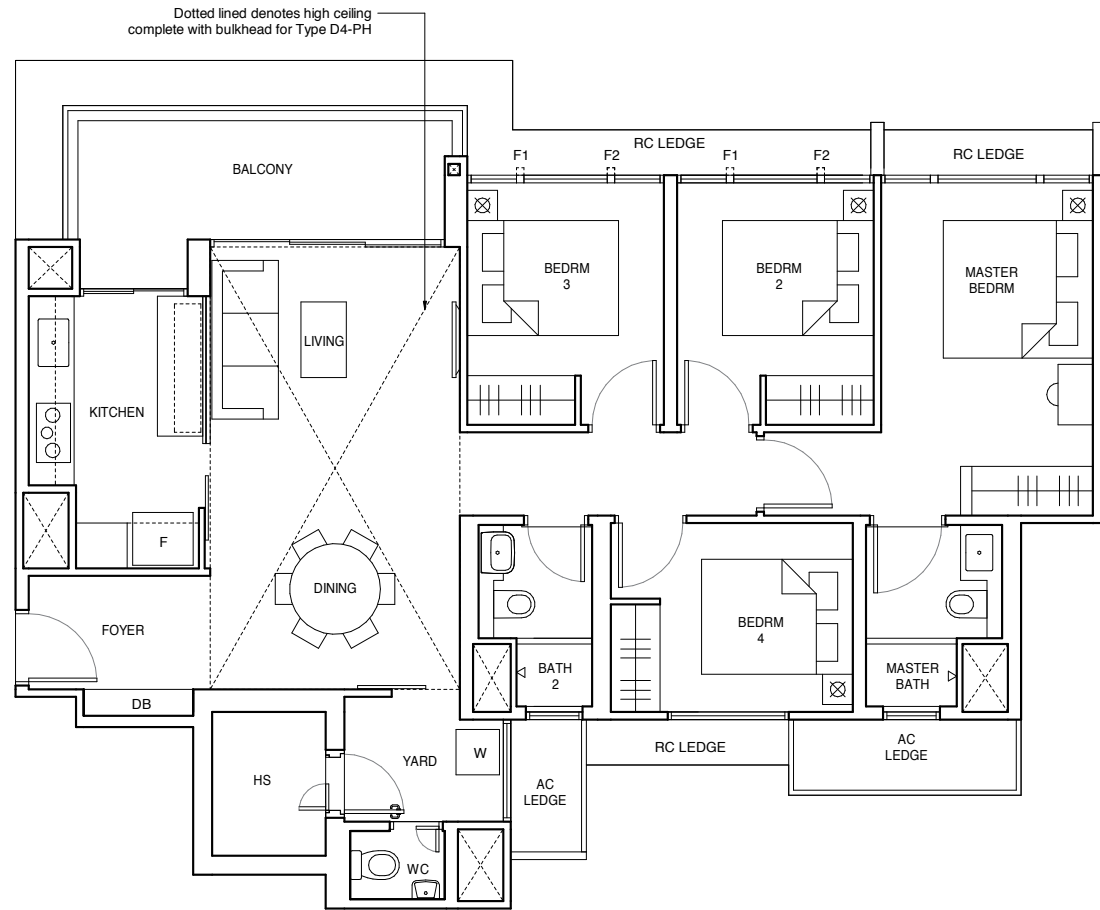


TYPE D4

1227 sqft / 114 sqm

(inclusive of 10 sqm Balcony & 5 sqm AC Ledge)

Blk 121, #02-08 to #15-08
Blk 123, #02-11* to #15-11*
Blk 127, #02-20 to #15-20

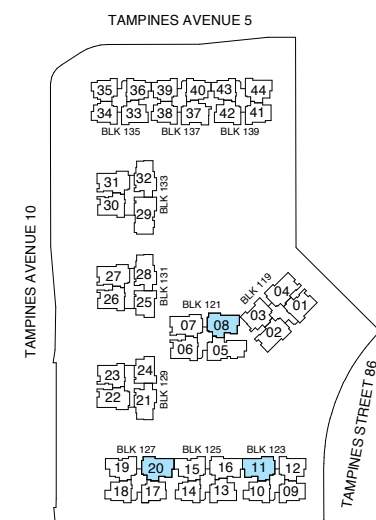
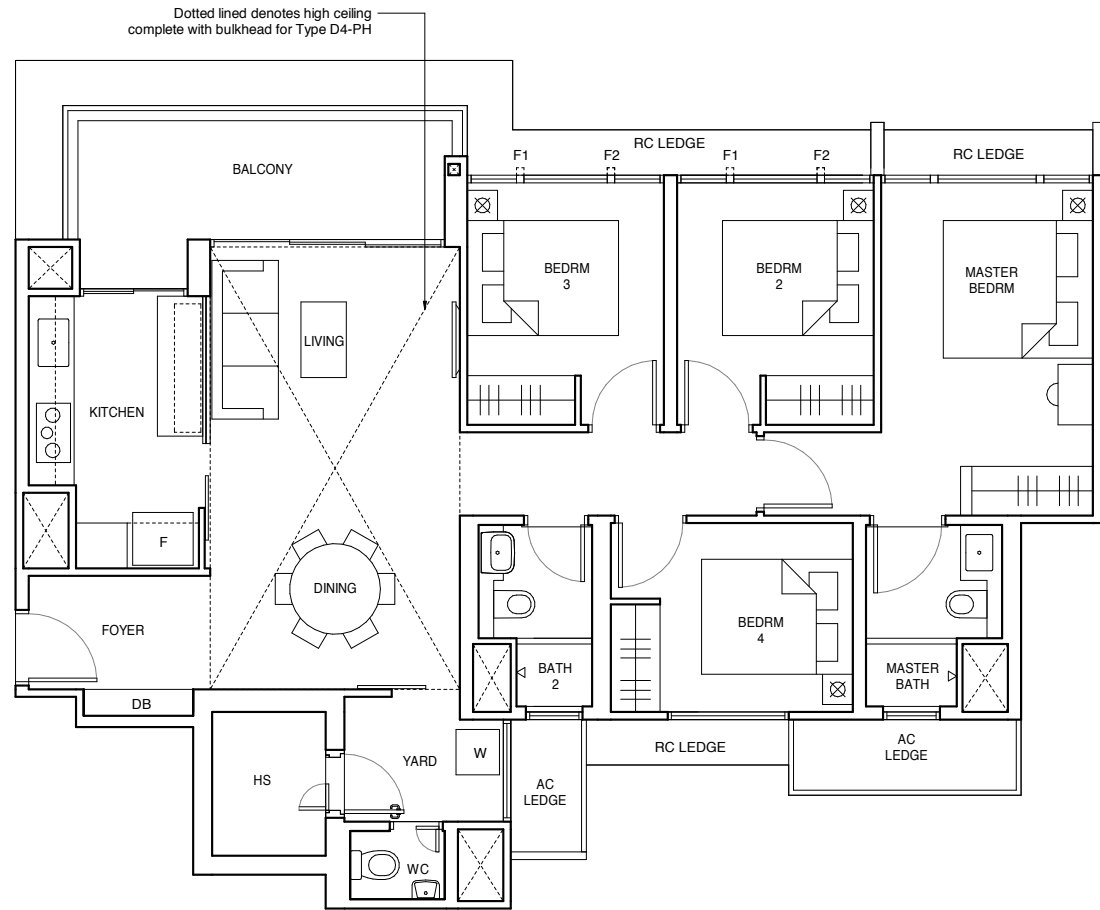


TYPE D4-PH

1442 sqft / 134 sqm

(inclusive of 10 sqm Balcony, 5 sqm AC Ledge & 20 sqm void over Living/Dining)

Blk 121, #16-08
Blk 123, #16-11*
Blk 127, #16-20



KEY PLAN
NOT TO SCALE

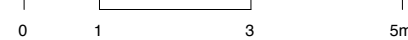
LEGEND

HS - Household Shelter W - Washer F - Fridge DB - Distribution Board * - Mirrored Unit

FULL HEIGHT ALUMINIUM FIN LOCATED AT LEVELS:

F1 - #01-08, #01-11*, #01-20, #02-08, #02-11*, #02-20, #05-08, #05-11*, #05-20, #06-08, #06-11*, #06-20, #09-08, #09-11*, #09-20, #10-08, #10-11*, #10-20, #13-08, #13-11*, #13-20, #14-08, #14-11* & #14-20

F2 - #03-08, #03-11*, #03-20, #04-08, #04-11*, #04-20, #07-08, #07-11*, #07-20, #08-08, #08-11*, #08-20, #11-08, #11-11*, #11-20, #12-08, #12-11*, #12-20, #15-08, #15-11*, #15-20, #16-08, #16-11* & #16-20



ALL PLANS ARE SUBJECT TO CHANGES BY THE RELEVANT AUTHORITIES. MEASUREMENTS ARE APPROXIMATE ONLY AND SUBJECT TO FINAL SURVEY. INFORMATION ACCURATE AT THE POINT OF PRINTING. BP No : A1720-00006-2019-BP01 DATED 11 AUG 2020, A1720-00006-2019-BP02 DATED 12 OCT 2020

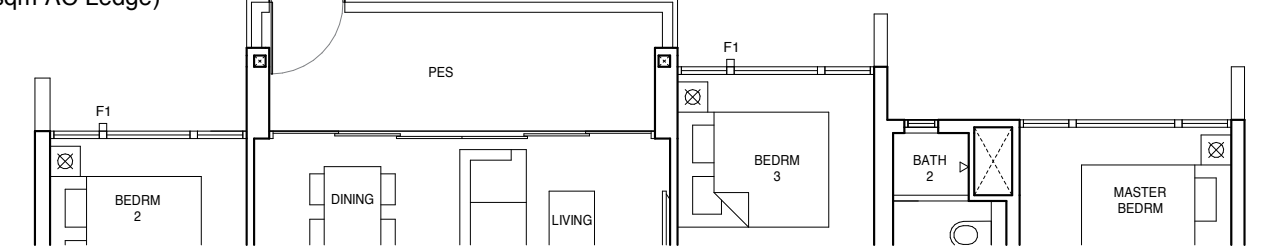
4-BEDROOM LUXURY

TYPE D5-G

1270 sqft / 118 sqm

(inclusive of 10 sqm PES & 5 sqm AC Ledge)

Blk 129, #01-21
Blk 131, #01-28*
Blk 133, #01-32*



TYPE D5

1270 sqft / 118 sqm

(inclusive of 10 sqm Balcony & 5 sqm AC Ledge)

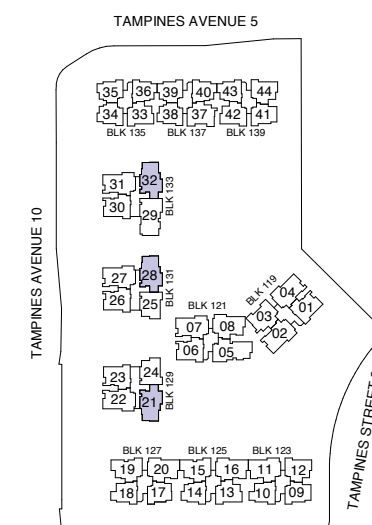
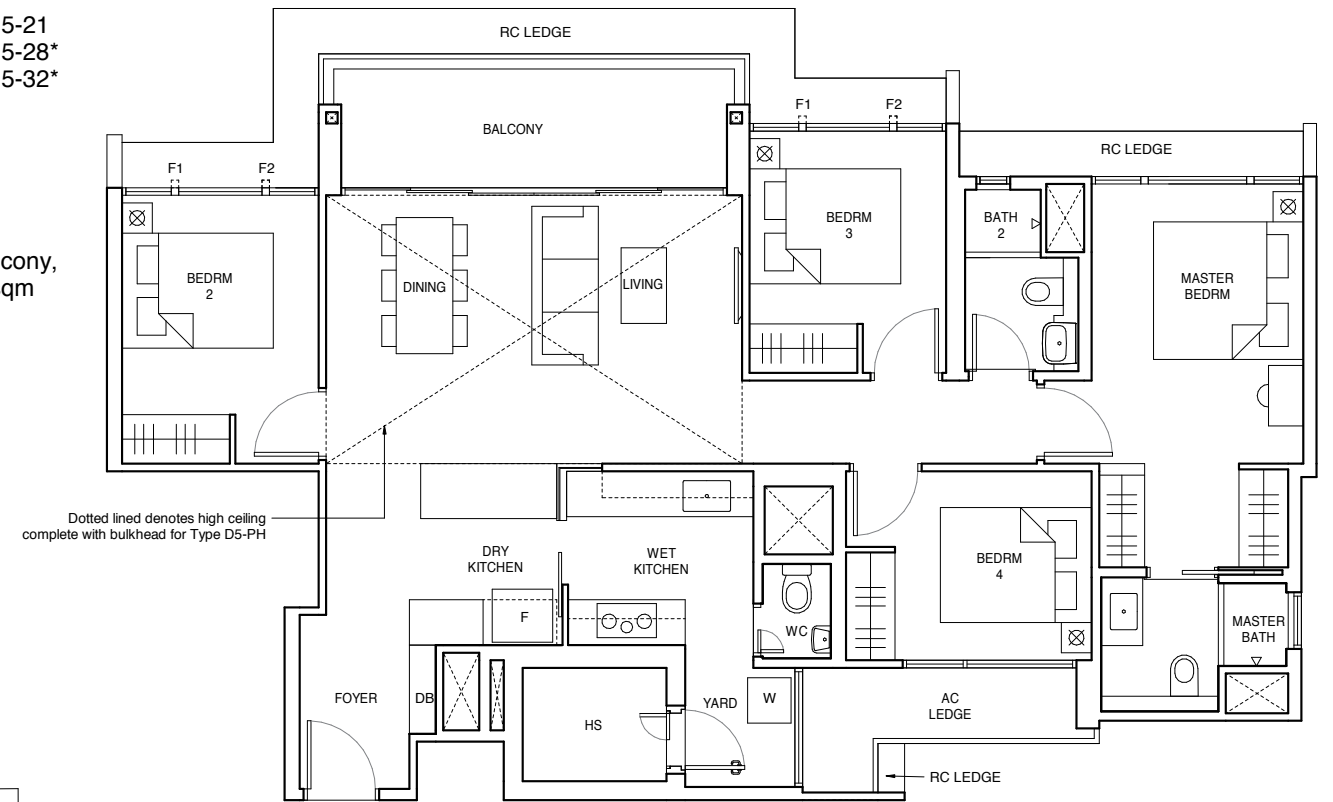
Blk 129, #02-21 to #15-21
Blk 131, #02-28* to #15-28*
Blk 133, #02-32* to #15-32*

TYPE D5-PH

1485 sqft / 138 sqm

(inclusive of 10 sqm Balcony, 5 sqm AC Ledge & 20 sqm void over Living/Dining)

Blk 129, #16-21
Blk 131, #16-28*
Blk 133, #16-32*



KEY PLAN
NOT TO SCALE

LEGEND

HS - Household Shelter W - Washer F - Fridge DB - Distribution Board * - Mirrored Unit

FULL HEIGHT ALUMINIUM FIN LOCATED AT LEVELS:

F1 - #01-21, #01-28*, #01-32*, #02-21, #02-28*, #02-32*, #05-21, #05-28*, #05-32*, #06-21, #06-28*, #06-32*, #09-21, #09-28*, #09-32*, #10-21, #10-28*, #10-32*, #13-21, #13-28*, #13-32*, #14-21, #14-28* & #14-32*

F2 - #03-21, #03-28*, #03-32*, #04-21, #04-28*, #04-32*, #07-21, #07-28*, #07-32*, #08-21, #08-28*, #08-32*, #11-21, #11-28*, #11-32*, #12-21, #12-28*, #12-32*, #15-21, #15-28*, #15-32*, #16-21, #16-28* & #16-32*



ALL PLANS ARE SUBJECT TO CHANGES BY THE RELEVANT AUTHORITIES. MEASUREMENTS ARE APPROXIMATE ONLY AND SUBJECT TO FINAL SURVEY. INFORMATION ACCURATE AT THE POINT OF PRINTING. BP No : A1720-00006-2019-BP01 DATED 11 AUG 2020, A1720-00006-2019-BP02 DATED 12 OCT 2020

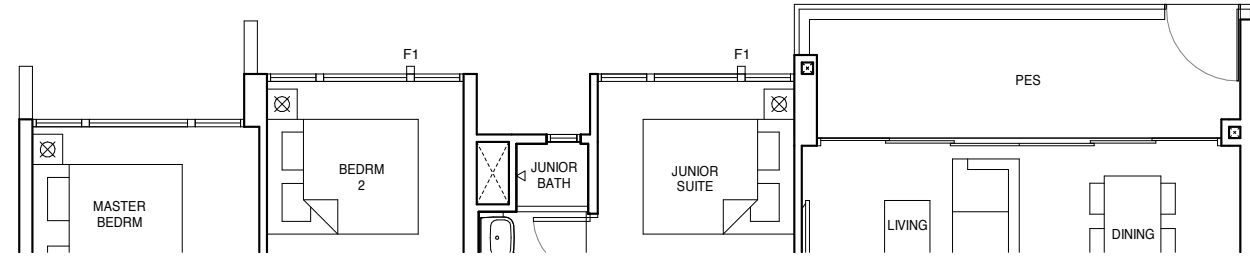
5-BEDROOM LUXURY

TYPE E1-G

1432 sqft / 133 sqm

(inclusive of 10 sqm PES & 7 sqm AC Ledge)

Blk 121, #01-05



TYPE E1

1432 sqft / 133 sqm

(inclusive of 10 sqm Balcony & 7 sqm AC Ledge)

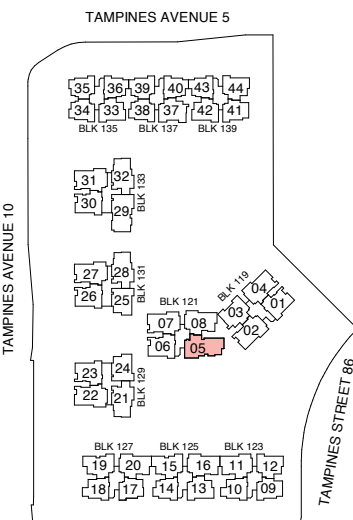
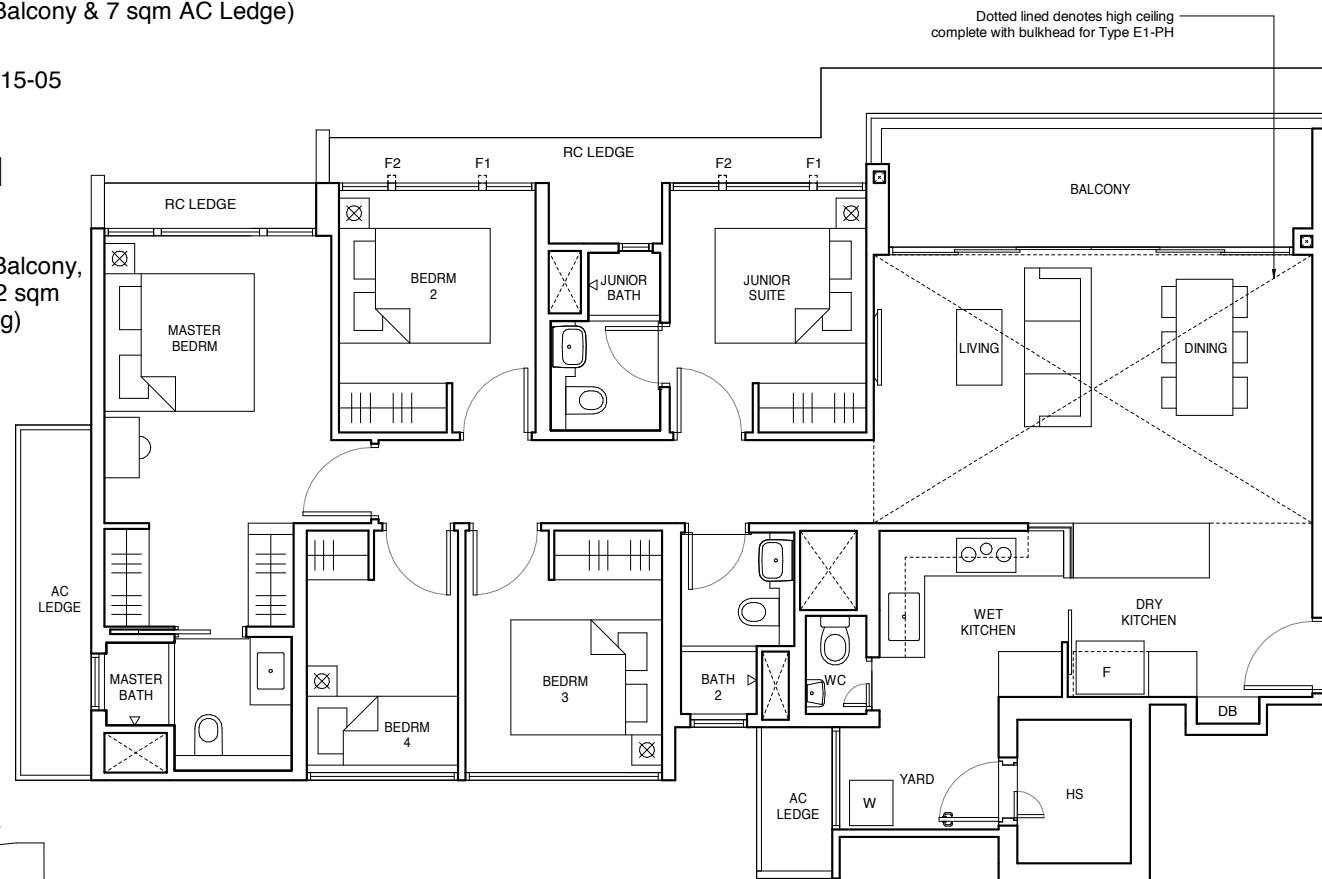
Blk 121, #02-05 to #15-05

TYPE E1-PH

1668 sqft / 155 sqm

(inclusive of 10 sqm Balcony, 7 sqm AC Ledge & 22 sqm void over Living/Dining)

Blk 121, #16-05



LEGEND

HS - Household Shelter W - Washer F - Fridge DB - Distribution Board * - Mirrored Unit

FULL HEIGHT ALUMINIUM FIN LOCATED AT LEVELS:
F1 - #01-05, #02-05, #05-05, #06-05, #09-05, #10-05, #13-05 & #14-05
F2 - #03-05, #04-05, #07-05, #08-05, #11-05, #12-05, #15-05 & #16-05

0 1 3 5m

ALL PLANS ARE SUBJECT TO CHANGES BY THE RELEVANT AUTHORITIES. MEASUREMENTS ARE APPROXIMATE ONLY AND SUBJECT TO FINAL SURVEY. INFORMATION ACCURATE AT THE POINT OF PRINTING.
BP No : A1720-00006-2019-BP01 DATED 11 AUG 2020, A1720-00006-2019-BP02 DATED 12 OCT 2020

KEY PLAN
NOT TO SCALE

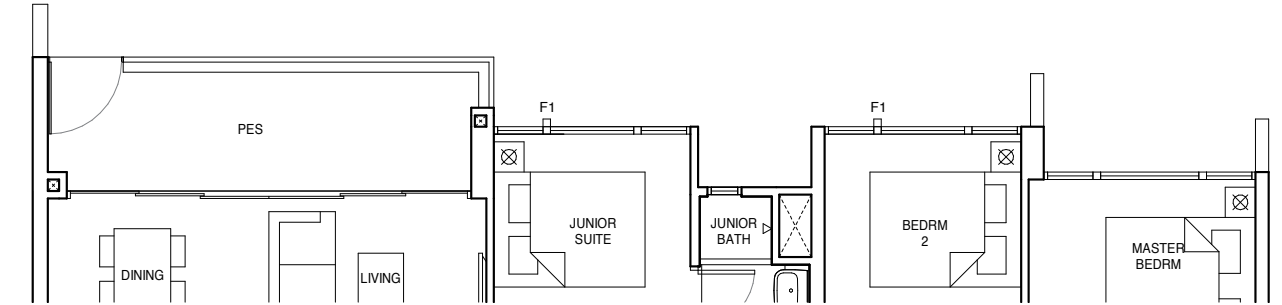
5-BEDROOM LUXURY

TYPE E2-G

1464 sqft / 136 sqm

(inclusive of 10 sqm PES & 6 sqm AC Ledge)

Blk 133, #01-29



TYPE E2

1464 sqft / 136 sqm

(inclusive of 10 sqm Balcony & 6 sqm AC Ledge)

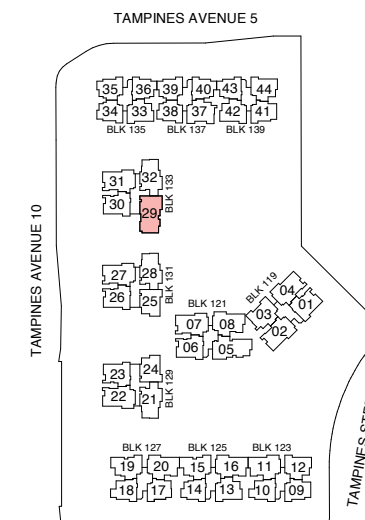
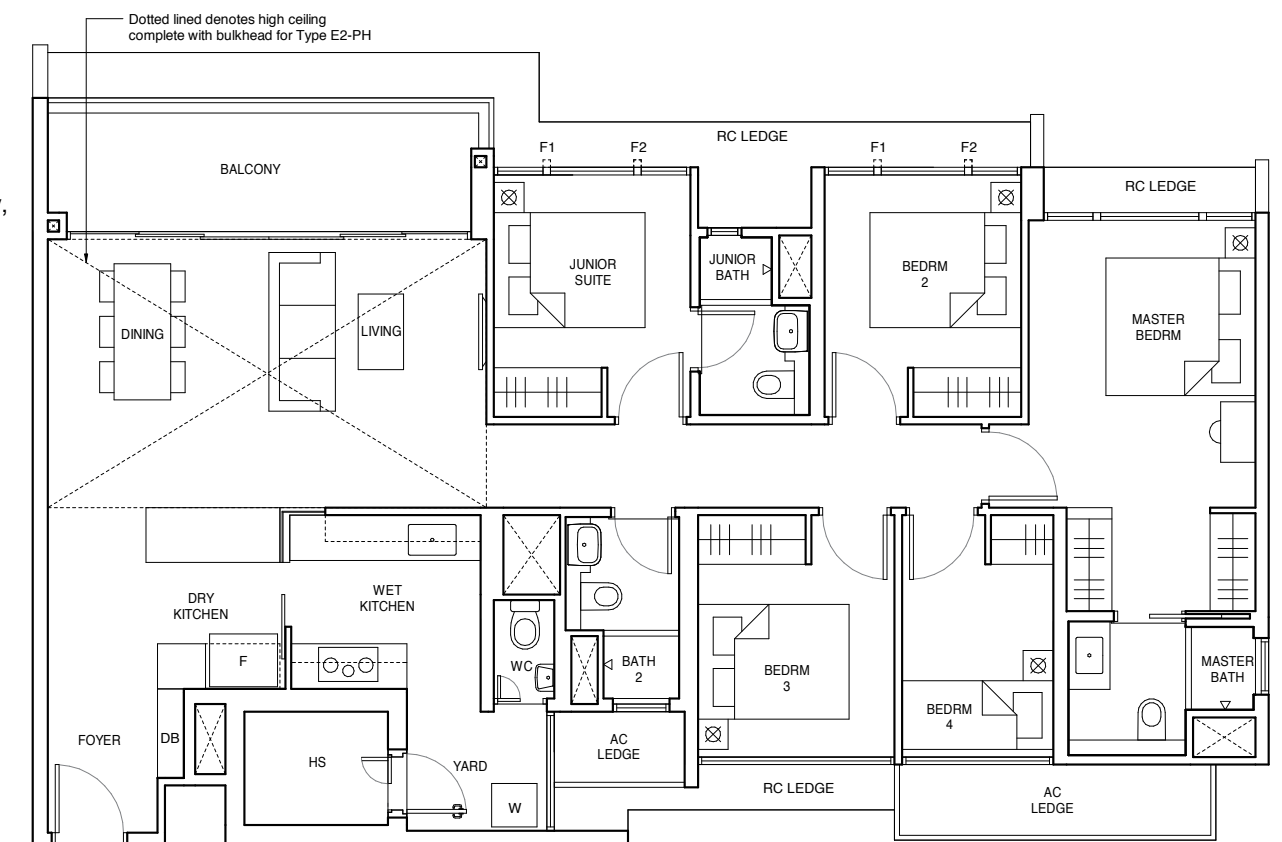
Blk 133, #02-29 to #15-29

TYPE E2-PH

1701 sqft / 158 sqm

(inclusive of 10 sqm Balcony, 6 sqm AC Ledge & 22 sqm void over Living/Dining)

Blk 133, #16-29



LEGEND

HS - Household Shelter W - Washer F - Fridge DB - Distribution Board * - Mirrored Unit

FULL HEIGHT ALUMINIUM FIN LOCATED AT LEVELS:
F1 - #01-29, #02-29, #05-29, #06-29, #09-29, #10-29, #13-29 & #14-29
F2 - #03-29, #04-29, #07-29, #08-29, #11-29, #12-29, #15-29 & #16-29

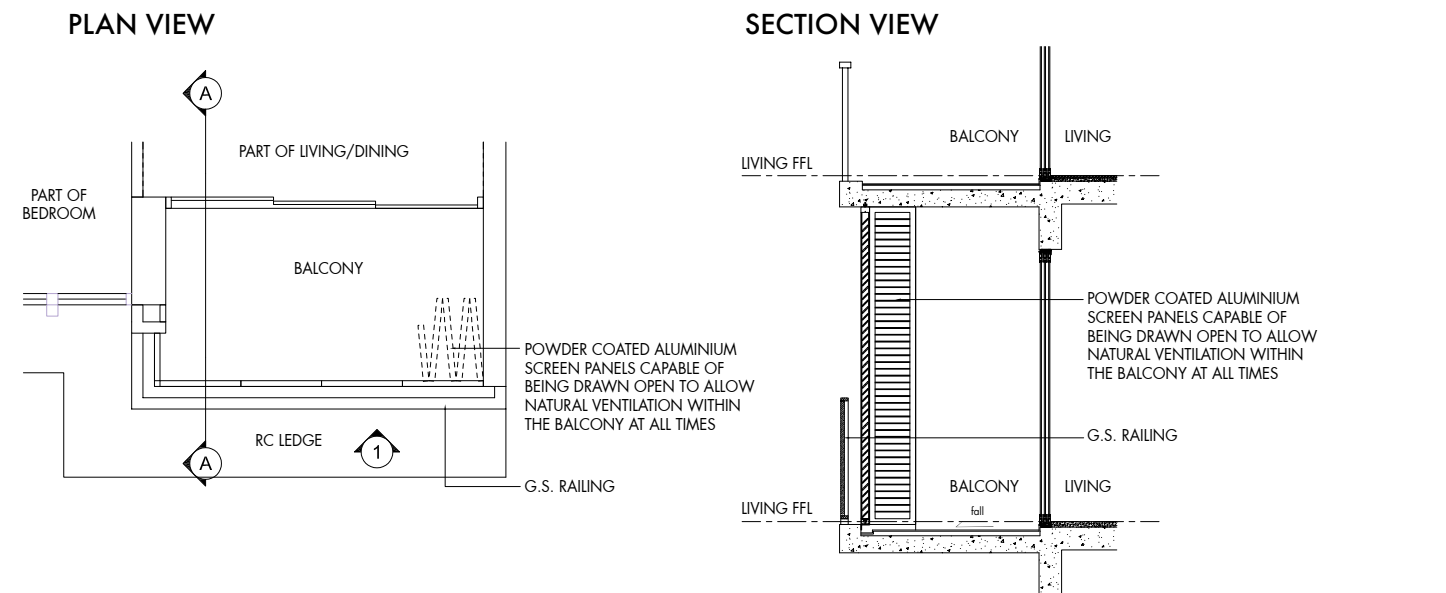
0 1 3 5m

ALL PLANS ARE SUBJECT TO CHANGES BY THE RELEVANT AUTHORITIES. MEASUREMENTS ARE APPROXIMATE ONLY AND SUBJECT TO FINAL SURVEY. INFORMATION ACCURATE AT THE POINT OF PRINTING.
BP No : A1720-00006-2019-BP01 DATED 11 AUG 2020, A1720-00006-2019-BP02 DATED 12 OCT 2020

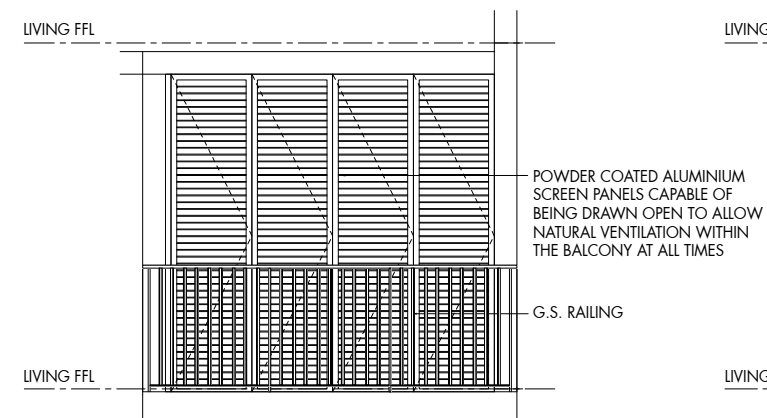
KEY PLAN
NOT TO SCALE

BALCONY SCREEN DETAILS

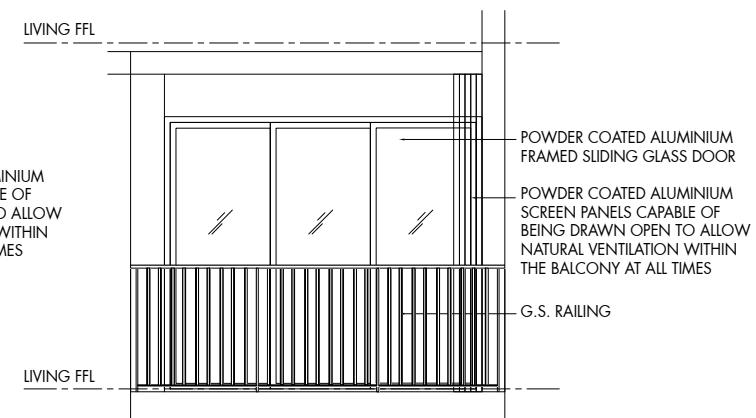
Hoi Hup Sunway is an award-winning collaboration between Hoi Hup Realty and Sunway Developments. Bringing together the expertise and experience of two real estate leaders, this winning combination has inspired many successful projects that include Rivercove Residences, Royal Square at Novena, City View @ Boon Keng and The Peak at Toa Payoh. One of their latest projects, Sophia Hills, has been honoured with Gold at the FIABCI World Prix d'Excellence Awards 2020 (Mid-rise Residential), EdgeProp Singapore Excellence Award 2020 for Top Development (Residential, Central, Completed), and FIABCI Singapore Property Awards 2019 (Mid-rise Residential and Heritage).



ELEVATION, CLOSE POSITION



ELEVATION, OPEN POSITION



NOTES:

1. BALCONY SCREEN IS NOT PROVIDED FOR THIS DEVELOPMENT.
2. THE BALCONY SHALL NOT BE ENCLOSED UNLESS WITH THE SCREEN APPROVED BY THE RELEVANT AUTHORITIES.
3. FINAL SELECTION OF MATERIAL, COLOUR AND DETAILING OF THE SCREEN IS SUBJECT TO MCST APPROVAL.
4. APPROVAL FROM MCST IS REQUIRED BEFORE INSTALLATION.
5. OWNER TO ENGAGE THEIR OWN CONTRACTOR TO INSTALL THE SCREEN OR OPT TO PRE-INSTALL THE SCREEN.
6. ALL INSTALLATION FEES TO BE BORNE BY THE OWNER.
7. MEASUREMENTS ARE APPROXIMATE ONLY AND SUBJECT TO FINAL SURVEY.



HOI HUP REALTY

An established property developer in Singapore, Hoi Hup Realty Pte Ltd is committed to creating living spaces of the highest quality, comfort, functionality, and style. It has been recognised with numerous accolades including the BCI Asia Top Ten Developers Award from 2017 to 2019, and the BCA Quality Excellence Award – Quality Champion (Platinum) in 2018 and 2019. Its current projects include Ki Residences at Brookvale and Parc Canberra.

www.hoihup.com



SCAN THE QR CODE OR
[VISIT HOIHUP.COM/PARCCENTRALRESIDENCES](http://www.hoihup.com/parccentralresidences)
TO FIND OUT MORE.

SUNWAY DEVELOPMENTS

As the property division of Sunway Group, Sunway Developments Pte Ltd is part of a leading property construction group that is listed on Bursa Securities, Malaysia. It has vast experience in managing and developing innovative and quality residential and non-residential properties, which include retail, leisure, healthcare, hospitality, and other commercial assets.

www.sunway.com.my

Developer: Hoi Hup Sunway Tampines JV Pte Ltd Company Reg No: 201903125Z Developer License No: C1376 Tenure of Land: 99 years from 22 April 2019 Lot No: LOT 07545K MK 28 AT TAMPINES AVENUE 10 (TAMPINES PLANNING AREA) Notice of Vacant Possession: 21 July 2025 Notice of Completion: 21 July 2028 BP Approval Number: A1720-00006-2019-BP01 dated 11 August 2020 A1720-00006-2019-BP02 dated 12 October 2020 Encumbrances on the Land: Mortgage in favour of United Overseas Bank Limited

Whilst reasonable care has been taken in the preparation of this brochure and the construction of the scale model and showflat, the Developer does not warrant their accuracy and cannot be held responsible for any inaccuracies or omissions. The statements, information and depictions may not be regarded or relied upon as statements or representations of fact, and they are not intended to form any part of the contract for the sale of the housing units. Visual representations, models, showflat, illustrations, photographs, pictures, drawings, displays and art renderings are artists' impressions of the development only, and are not to be relied upon as representations of fact. The brand, colour and model of all materials, fittings, equipment, finishes, installations and appliances supplied/provided are subject to the Developer's/its architect's selection, market availability and the sole discretion of the Developer.

All information, including equipment, materials, fittings, finishes, installations and appliances, descriptions, plans and specifications, are current at the time of publishing, and are subject to such changes as may be required by the Developer or the relevant authorities, and cannot form part of an offer or contract. All plans and layouts are not to scale and are subject to change/amendments as may be directed or approved by the relevant authorities. The areas indicated in the brochure are approximate measurements only and are subject to final survey. The Developer reserves the right to modify any unit, plans, layouts, the building, the development or any part thereof prior to completion in its absolute discretion or as directed or approved by the architect or relevant authorities.

